



erehabdata





eRehabData.com

*IRF-PPS
Statistics and Trends*

Sam Fleming

Better outcomes for everyone.

Comparing Data eRehabData.com

Positioning for 2000 and Beyond

- 100 Facilities
- 98,000 Patient (65/35 Split Medicare / Non)
- Discharged Between Jan 1, 1998 – Dec 31, 2000
- Each hospital only represented for a single year (most recent)
- PF2K is congruent with RAND

Better outcomes for everyone.

Comparing Data eRehabData.com

eRehabData®

- 185 IRFs, 25% of discharges nationally. This is rising to 300 IRFs and about 40% of discharges by end of 2010
- 140,000+ discharges per year (66/34 split MC/non-MC)
- Admit after 01/01/02 discharged before 06/30/10
- All payers except where otherwise identified
- All CMGs are restated as 2006 CMGs to allow direct comparisons.

Better outcomes for everyone.

Comparing Data eRehabData.com

Some Background Financials:
See Schedule in Handouts

Better outcomes for everyone.

Comparing Data eRehabData.com

Averages and Standard Deviations

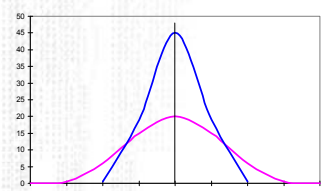
- Mean
- Standard Deviation defines "Normal"
- Large Standard Deviations mean broad curves, Small ones mean narrow curves.

Better outcomes for everyone.

Comparing Data eRehabData.com

Distributions

- Which curve has greater variation (dispersion)?
- What are other factors that affect the shape of these curves?



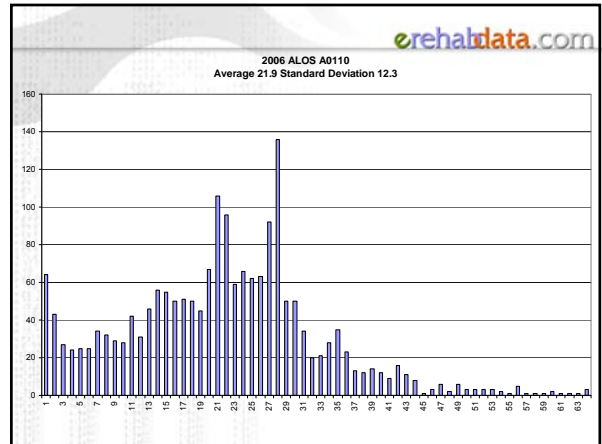
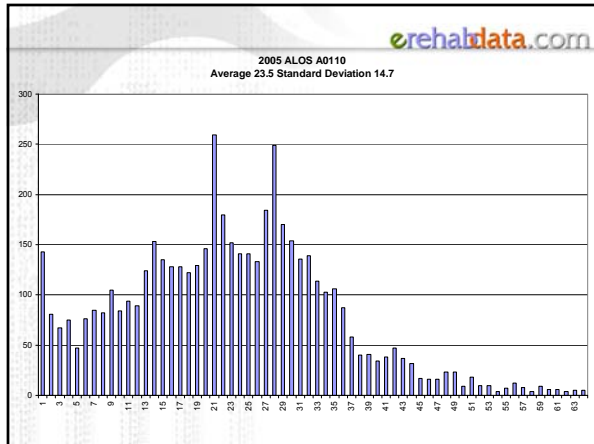
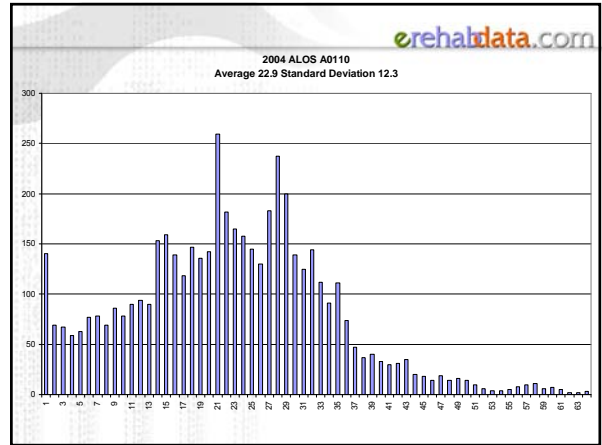
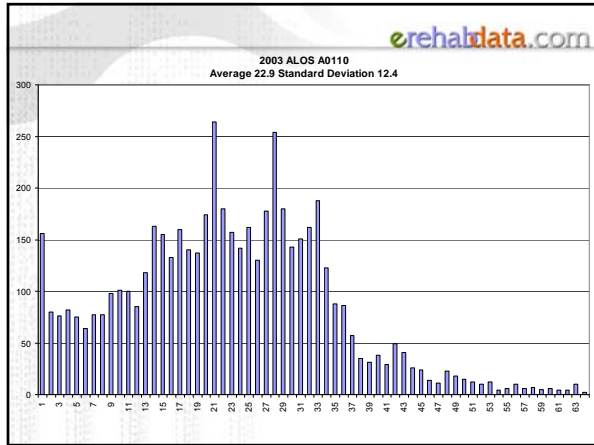
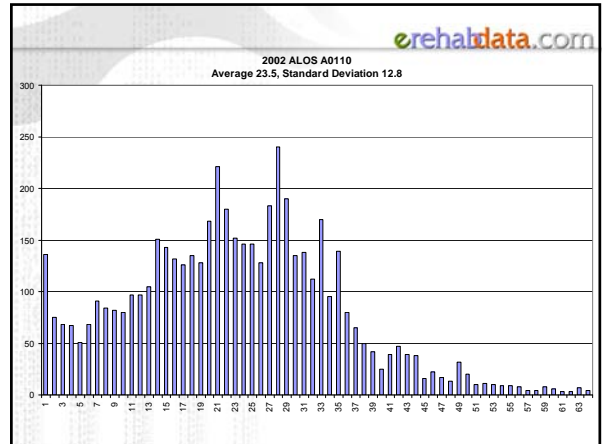
Better outcomes for everyone.

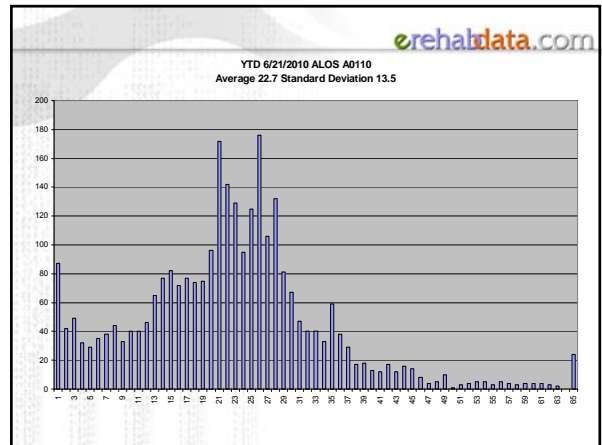
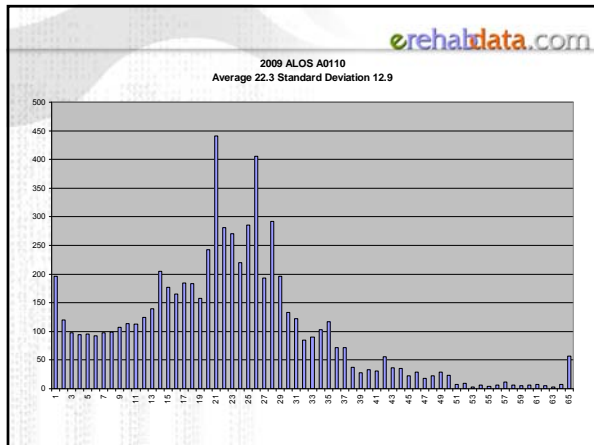
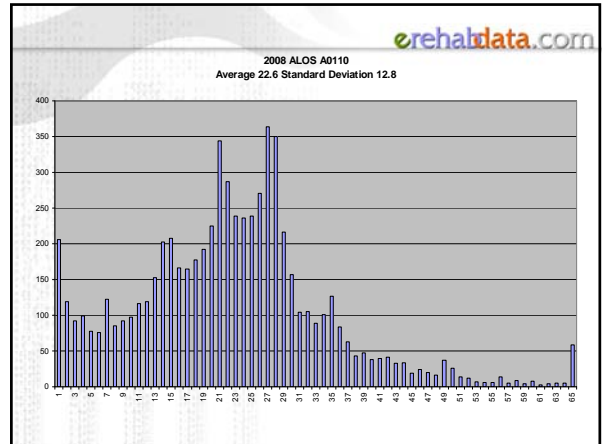
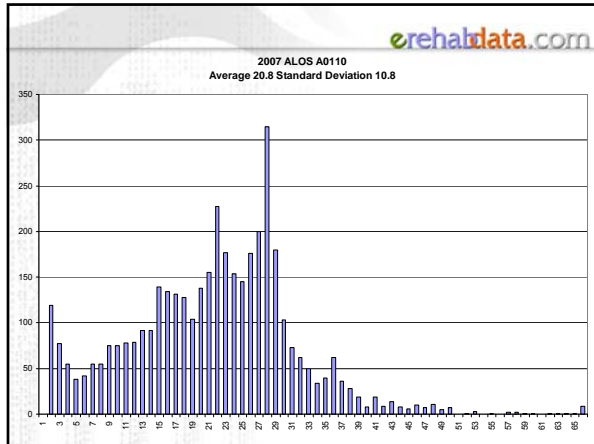
erehabdata.com

Averages and Standard Deviations

- eRD Data – Medicare – CMG 0110 – YTD 2010
- Medicare Discharges Only
- ALOS – 22.7 days
- Standard Deviation – 13.5 days
- Final Rule LOS – 28 Days
- N = 1,350

Better outcomes for everyone.



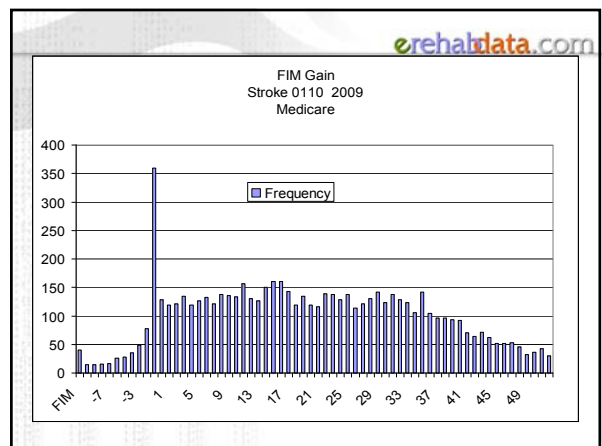


erehabdata.com

Averages and Standard Deviations

- eRD Data – Medicare CMG 0110 – 2009
- Mean FIM Gain – 21.78 points
- Standard Deviation – 16.51 points
- N = 6,735

Better outcomes for everyone.



The Slide That Won't Go Away

- Beware managing a patient to the ALOS published in the Final Rule (or any other ALOS for that matter).
- Manage the ALOS for the CMG or RIC, not the individual patient.
- Embrace the variance intrinsic to rehabilitation
- The new LOS numbers published in the 2006 rule are not treatment guidelines.

Better outcomes for everyone.

RIC Distribution By Year

- See attached schedules
- Pre-PPS to Post-PPS

Better outcomes for everyone.

ALOS

- See attached schedule
- Shorter Length of Stay across the board. ALOS decrease has flattened out and seems to be heading up a little bit. This is due, in some part, to the 60% Rule and payment denials reducing ortho patients.
- Average Length of Stay reacts to publication of new transfer LOS ala the 2006 rule.
- Smaller SD (as percentage) indicate narrowing of the distribution as patients are managed to the ALOS.
- LOS difference are understated as case weights have increased as well

Better outcomes for everyone.

**Yearly Trends – Medicare
Using 2006 CMGs**

	CMI	ALOS	FIM Gain
2002	1.06	13.11	18.79
2003	1.07	12.67	18.49
2004	1.08	12.61	19.12
2005	1.14	13.32	19.95
2006	1.19	13.23	20.35
2007	1.23	13.46	20.58
2008	1.25	13.67	20.91
2009	1.29	13.58	21.52
YTD June 2010	1.29	13.58	21.65

Better outcomes for everyone.

FIM Outcomes

- See attached detail
- Slight decreases but change in scoring makes comparison difficult

Better outcomes for everyone.

Discharge Destination

- Decrease in 'Discharge Home' rate
- Community Discharges for Stroke
 - Stroke 2002 – 67.39%
 - Stroke 2010 – 60.65%

Better outcomes for everyone.

eRehabData.com

Comorbidity Tiers

- Improvement of Co-Morbidity Scoring
- Facilities now coding when they didn't before.
- Big increases in the number of patients in Tiers
- See Attached Detail.

Better outcomes for everyone.

eRehabData.com

Annual Trends - Medicare

	Tier 0	Long Stay	Disch. Home
2002	74.90%	0.64%	74.09%
2003	73.19%	0.39%	74.25%
2004	72.30%	0.38%	74.33%
2005	70.79%	2.14%	72.14%
2006	69.10%	6.50%	69.92%
2007	67.34%	5.48%	68.99%
2008	65.02%	3.45%	67.97%
2009	61.58%	1.57%	67.12%
YTD 2010	59.94%	1.72%	67.29%

Better outcomes for everyone.

eRehabData.com

Case Weights

- See attached schedule
- Increase in average case weight, increases from 2005 are influenced by 60% rule
- CMI increases using the 2002 CMGs were a couple of points higher in most years.
- PF2K about 1.0 (expected)
- SD remain similar (expected)

Better outcomes for everyone.

eRehabData.com

Corrected Statement of LOS Drop

- ALOS has dropped since 1999
- ALOS days lower than the RAND/PPS presumptions.
- Medicare margins are still unsustainably high in the IRF setting on a case by case basis.
- The 60% Rule and the new IRF-PPS Rule are aimed at reducing these margins.
- Payment denials are a more insidious way of restricting patient access by having murky requirements.

Better outcomes for everyone.

eRehabData.com

RIC Distribution By Region

- See attached schedule
- Large regional variances for some RICs but these difference are getting smaller and smaller
- Particularly the always controversial RIC 08 – Replacement of Lower Extremity

Better outcomes for everyone.

eRehabData.com

Compliance

- The 60% Rule is obtusely worded.
- There are wide variations in enforcement standards and compliance across the country.
- "Presumptive" definition in transmittal does not provide reliable compliance guidance as FIs can perform medical record audits at will.

Better outcomes for everyone.

rehabdata.com

Presumptive Versus Conditional Compliance

(We made up these terms so don't look for them in the rules)

- Presumptive matches the Transmission from CMS to the FI –
 - This was done for convenience for the FI, not protection for the IRF
- Conditional matches the actual requirements of the 60% Rule.

Better outcomes for everyone.

rehabdata.com

CASPAR Report

- Was developed by Iowa Foundation for Medical Care
- Used by FIs to determine presumptive compliance
- Contained errors in its criteria
- Won't release individual patient data to facilities
- Incorrect date sensitivity
- The existence of the CASPAR reports means there is really a third compliance standard and it is currently a secret.

Better outcomes for everyone.

rehabdata.com

Annual Trends – All Payers

	Conditional Compliance	Presumptive Compliance	RIC 08 Percentage
2002	46.65%	64.96%	24.25%
2003	46.03%	64.56%	25.02%
2004	49.5%	66.46%	25.40%
2005	59.67%	73.68%	21.69%
2006	64.1%	77.94%	18.82%
2007	65.87%	78.63%	16.68%
2008	65.96%	77.83%	15.36%
2009	67.21%	77.67%	13.32%
YTD 2010	66.79%	77.39%	12.19%

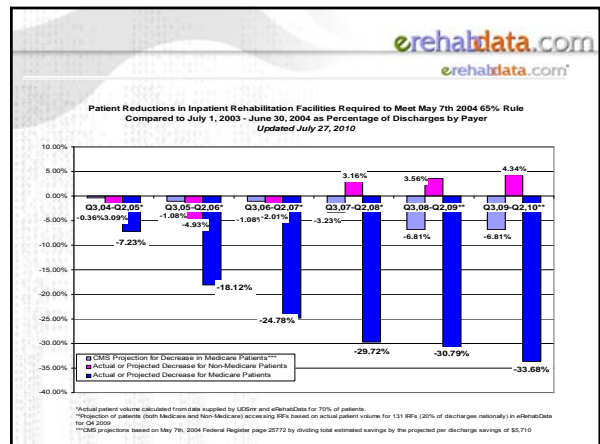
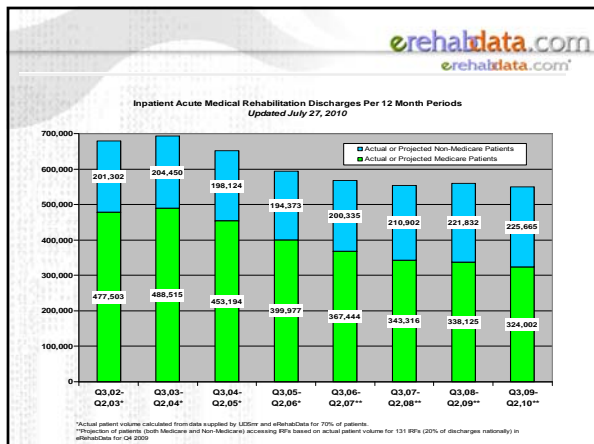
Better outcomes for everyone.

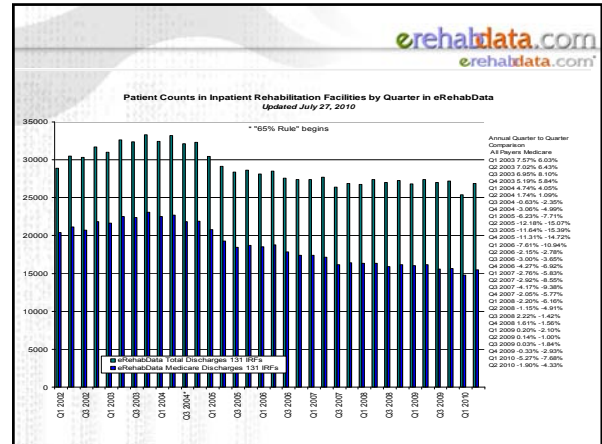
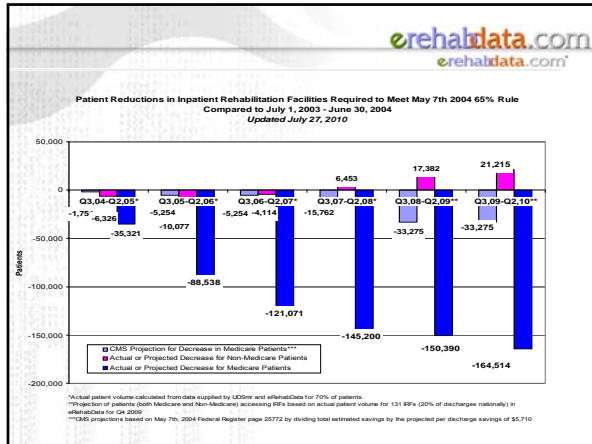
rehabdata.com

Compliance Analysis

- See Detail
- Conditional Compliance (strictest)
- Presumptive
- Actual impact so far has been more severe than the estimates.
- Histogram of current compliance suggests that future impact may be moderately less than the current projections.

Better outcomes for everyone.





60% Rule...

- Is denying access to many patients
- Is emptying 15% to 20% of bed days (and subsequently forcing closure of those beds)
- Raises the ALOS in the country
- Makes the rest of the country look more like the Pacific region did in 2003

Better outcomes for everyone.

Appeals and Denials

- "Appeals Tracking" was integrated into eRehabData in February 2007.
- Appeals tracking is designed to assist hospitals with management and tactics for appealing payment denials.
- Appeals data in eRehabData is the only national database of appeals information.
- See Attached

Better outcomes for everyone.

Pre-Admission Screening

- Language is in the proposed rule
- Language is in Medicare Beneficiaries Manual
- eRehabData has a new tool (PAS tool) for pre-admission screening to assist in denial proofing your patient.
- Is included with your eRehabData subscription fee

Better outcomes for everyone.

Contact Information

eRehabData.com
 Sam@erehabdata.com
 (202) 872-1033

Better outcomes for everyone.

CMS Cost Report Data

fy	type	count	mc alos	avg mc cost/day	avg mc cost/disch	avg mc anc cost/day	avg mc anc cost/disch	avg mc rout cost/day	avg mc rout cost/disch	mc disch	mc days	total days	mc % of disch	mc % of days	mc total cost	mc disch/facility	overall occupancy rate
FY1996	IRF-Free Hosp	186	18.39	\$643	\$11,823	\$272	\$4,999	\$371	\$6,823	111,131	2,043,187	2,998,142	70.03%	68.15%	1,313,867,294	597	69.63%
FY1997	IRF-Free Hosp	198	18.42	\$645	\$11,876	\$271	\$4,992	\$374	\$6,884	115,890	2,134,674	3,175,753	67.99%	67.22%	1,376,259,493	585	69.74%
FY1998	IRF-Free Hosp	207	17.93	\$621	\$11,127	\$259	\$4,637	\$362	\$6,460	120,553	2,161,399	3,292,492	65.97%	65.65%	1,341,381,416	582	71.32%
FY1999	IRF-Free Hosp	190	17.50	\$611	\$10,697	\$253	\$4,436	\$358	\$6,291	128,894	2,255,793	3,389,478	66.75%	66.55%	1,378,814,698	678	73.87%
FY2000	IRF-Free Hosp	197	16.93	\$634	\$10,727	\$258	\$4,375	\$375	\$6,352	137,788	2,332,901	3,475,689	67.22%	67.12%	1,478,005,336	699	70.48%
FY2001	IRF-Free Hosp	213	15.55	\$679	\$10,556	\$268	\$4,172	\$411	\$6,384	134,930	2,098,120	3,188,330	67.89%	65.81%	1,424,260,930	633	73.89%
FY2002	IRF-Free Hosp	209	14.79	\$636	\$9,409	\$248	\$3,662	\$389	\$5,747	165,899	2,453,906	3,619,812	69.05%	67.79%	1,560,898,199	793	74.14%
FY2003	IRF-Free Hosp	215	14.31	\$692	\$9,905	\$273	\$3,909	\$419	\$5,996	174,905	2,503,724	3,598,724	70.76%	69.57%	1,732,456,032	821	72.09%
FY2004	IRF-Free Hosp	215	14.21	\$748	\$10,634	\$298	\$4,237	\$450	\$6,397	183,081	2,601,679	3,719,937	71.52%	69.94%	1,946,895,699	822	71.08%
FY2005	IRF-Free Hosp	211	14.28	\$843	\$12,046	\$337	\$4,812	\$507	\$7,234	152,964	2,184,480	3,216,486	70.00%	67.92%	1,842,608,605	724	66.01%
FY2006	IRF-Free Hosp	213	13.88	\$943	\$13,092	\$378	\$5,239	\$566	\$7,853	138,229	1,918,199	2,983,197	67.25%	64.30%	1,809,688,672	665	64.01%
FY2007	IRF-Free Hosp	213	13.92	\$947	\$13,184	\$376	\$5,234	\$571	\$7,950	139,439	1,941,508	3,166,047	64.77%	61.32%	1,838,299,684	650	65.18%
FY2008	IRF-Free Hosp	15	14.40	\$1,135	\$16,349	\$402	\$5,785	\$734	\$10,564	7,188	103,510	190,906	56.61%	54.22%	1,177,513,201	508	64.68%
FY1996	IRF Units	837	14.95	\$724	\$10,824	\$271	\$4,056	\$453	\$6,769	217,266	3,247,090	4,804,229	69.67%	67.59%	2,351,779,436	260	65.72%
FY1997	IRF Units	920	14.28	\$747	\$10,663	\$279	\$3,988	\$467	\$6,675	237,947	3,398,896	5,148,933	64.03%	66.01%	2,537,322,163	259	65.08%
FY1998	IRF Units	945	13.95	\$760	\$10,600	\$282	\$3,928	\$478	\$6,672	246,734	3,441,726	5,379,422	64.77%	63.98%	2,615,383,747	261	65.10%
FY1999	IRF Units	974	13.54	\$778	\$10,525	\$285	\$3,856	\$493	\$6,669	263,470	3,566,349	5,549,843	65.23%	64.26%	2,773,020,023	271	66.01%
FY2000	IRF Units	967	13.07	\$798	\$10,433	\$289	\$3,781	\$509	\$6,653	282,544	3,691,941	5,728,268	63.81%	64.45%	2,947,901,379	292	67.25%
FY2001	IRF Units	974	12.39	\$847	\$10,500	\$301	\$3,734	\$546	\$6,766	289,982	3,593,357	5,589,229	65.26%	64.29%	3,044,860,820	298	66.05%
FY2002	IRF Units	953	11.98	\$890	\$10,654	\$311	\$3,728	\$578	\$6,926	306,296	3,667,992	5,621,070	66.33%	65.25%	3,263,370,654	398	65.62%
FY2003	IRF Units	971	11.85	\$925	\$10,967	\$321	\$3,809	\$604	\$7,158	319,652	3,787,923	5,700,306	66.81%	66.45%	3,505,633,867	378	66.04%
FY2004	IRF Units	994	12.05	\$987	\$11,888	\$338	\$4,067	\$649	\$7,821	317,066	3,819,258	5,716,219	68.51%	66.81%	3,769,232,136	368	64.43%
FY2005	IRF Units	995	12.48	\$1,082	\$13,505	\$383	\$4,786	\$699	\$8,720	280,087	3,496,370	5,409,161	65.83%	64.64%	3,782,660,942	358	61.51%
FY2006	IRF Units	981	12.54	\$1,154	\$14,476	\$401	\$5,034	\$753	\$9,442	251,445	3,154,364	5,134,990	63.41%	61.43%	3,639,978,085	351	59.52%
FY2007	IRF Units	924	12.81	\$1,207	\$15,472	\$417	\$5,346	\$790	\$10,126	221,351	2,836,369	4,844,985	60.65%	58.54%	3,424,706,036	345	59.53%
FY2008	IRF Units	104	13.22	\$1,262	\$16,690	\$446	\$5,892	\$817	\$10,798	22,005	290,927	498,184	59.98%	58.40%	367,268,114	400	58.77%
FY1996	LTACH	124	26.93	\$726	\$19,545	\$295	\$7,933	\$431	\$11,612	34,923	940,452	2,468,871	59.70%	38.09%	682,561,378	282	63.24%
FY1997	LTACH	146	27.89	\$774	\$21,584	\$322	\$8,978	\$452	\$12,607	37,525	1,046,539	2,469,947	67.24%	42.37%	809,950,836	257	61.83%
FY1998	LTACH	175	28.06	\$771	\$21,648	\$327	\$9,164	\$445	\$12,484	43,277	1,214,416	2,775,440	67.86%	43.76%	936,859,678	247	64.33%
FY1999	LTACH	181	28.11	\$778	\$21,873	\$325	\$9,129	\$453	\$12,744	53,953	1,516,693	3,090,401	70.67%	49.08%	1,180,119,225	298	65.90%
FY2000	LTACH	194	28.14	\$805	\$22,647	\$334	\$9,396	\$471	\$13,252	58,888	1,657,070	3,150,110	71.52%	52.60%	1,333,656,266	304	67.04%
FY2001	LTACH	225	28.10	\$853	\$23,982	\$354	\$9,951	\$499	\$14,014	72,648	2,041,731	3,804,363	71.88%	53.67%	1,742,228,876	323	68.64%
FY2002	LTACH	278	26.58	\$932	\$24,777	\$384	\$10,201	\$524	\$13,927	112,946	3,001,581	5,051,283	76.60%	59.42%	2,798,479,652	320	67.58%
FY2003	LTACH	314	26.74	\$994	\$26,592	\$415	\$11,097	\$555	\$14,848	118,214	3,160,960	5,396,474	74.16%	58.57%	3,143,571,997	331	65.80%
FY2004	LTACH	351	26.80	\$1,067	\$28,594	\$450	\$12,066	\$592	\$15,851	132,148	3,541,240	5,806,130	74.18%	60.99%	3,778,649,872	318	64.56%
FY2005	LTACH	381	26.73	\$1,136	\$30,362	\$487	\$13,018	\$624	\$16,678	135,694	3,627,694	5,970,021	72.45%	60.77%	4,119,926,632	282	64.37%
FY2006	LTACH	384	26.92	\$1,192	\$32,083	\$513	\$13,808	\$651	\$17,538	136,244	3,667,686	6,212,573	71.02%	59.04%	4,371,110,376	257	65.22%
FY2007	LTACH	389	26.88	\$1,247	\$33,505	\$536	\$14,406	\$683	\$18,361	132,667	3,565,477	6,264,217	67.73%	56.92%	4,444,992,160	240	64.99%
FY2008	LTACH	30	27.52	\$1,149	\$31,625	\$476	\$13,097	\$666	\$18,313	11,256	309,743	705,768	62.25%	43.89%	355,965,813	223	78.41%

Fleming-AOD, inc

Inpatient Rehabilitation Facilities
Dense Statistics

	2001	2002	2003	2004	2005	2006	2007	2008-	2009-
Total IRF*	1,157	1,188	1,211	1,227	1,231	1,224	1,202	1,191	1,184
Hospitals	214	215	215	217	217	217	219	219	219
Units	943	973	996	1,010	1,014	1,007	983	972	965
Total Beds*	35,115	36,453	36,785	37,549	37,294	36,769	36,187	33,846	32,250
Hospitals	12,760	13,355	13,513	13,523	13,137	12,840	12,917	12,082	11,512
Units	22,356	23,098	23,272	24,026	24,157	23,929	23,270	21,765	20,738
Occupancy Rate - CMS	73.89%	74.14%	72.09%	71.08%	66.01%	64.01%	65.18%	64.68%	
Hospitals	66.05%	65.62%	66.04%	64.43%	61.51%	59.52%	59.53%	58.77%	
Units	415,579	439,631	478,723	496,695	449,321	404,255	370,048	343,787	338,534
Total Medicare Discharges *^									
Medicare Percent of Discharges - CMS	67.89%	69.05%	70.76%	71.52%	70.00%	67.25%	64.77%	56.61%	
Hospitals	65.26%	66.33%	66.81%	68.51%	65.83%	63.41%	60.65%	59.98%	
Units	\$4.51	\$5.65	\$6.16	\$6.43	\$6.40	\$6.29	\$5.95	\$5.72	\$5.77
Total Medicare Outlays (Billions) *^									
Average Medicare Payment Per Discharge ^	\$11,919	\$12,431	\$13,147	\$14,094	\$14,798	\$15,639	\$16,178	\$16,579	
Average Length of Stay Medicare ^	14	13.11	12.67	12.6	13.3	13.21	13.44	13.68	13.55
Case Mix Index - Medicare ^	1	1.06	1.07	1.08	1.14	1.19	1.22	1.25	1.29
Tier Zero Percentage - Medicare ^	74.90%	73.10%	72.30%	70.80%	69.10%	67.50%	65.10%	61.70%	
Discharged to Community - Medicare ^	77.20%	77.00%	77.00%	74.80%	72.40%	71.40%	70.40%	69.10%	
Margins *	1.50%	11.00%	17.90%	16.30%	13.10%	12.30%	11.70%	4.5%	Projected
Hospitals	1.60%	18.50%	23.00%	24.30%	20.50%	17.40%	18.50%		
Units (skewed by cost report data)	1.50%	6.20%	14.90%	12.10%	9.20%	9.60%	7.90%		

* MedPAC

^ eRehabData.com

~ All Numbers eRehabData.com (actual or interpolated)

Medicare Patients
RIC Distribution - Patient Counts

RIC		PF2K N	eRD 2002	eRD 2003	eRD 2004	eRD 2005	eRD 2006	eRD 2007	eRD 2008	eRD 2009	eRD 2010*
01	Stroke	17,972	21187	22384	21209	21283	22528	21047	18923	18426	11411
02	Traumatic Brain Injury	1,165	1681	2024	2236	2487	2863	2965	2743	2738	1684
03	Nontraumatic Brain Injury	2,051	2604	2855	3164	3655	4220	3854	3604	3702	2353
04	Traumatic Spinal Cord Injury	643	823	835	979	904	1023	888	827	863	509
05	Nontraumatic spinal cord	3,031	4596	5098	4809	4371	4621	4010	3608	3758	2314
06	Neurological	3,635	4414	5195	5295	5032	5952	5666	4714	4773	2953
07	Fracture of Lower Extremity	9,397	13693	15660	15637	15536	16018	14941	13310	11897	6879
08	Replacement of Lower Extremity Joint	19,783	28807	32875	32652	24318	21053	16572	13136	10916	6552
09	Other Orthopedic	4,982	5202	5987	5966	4891	4907	4626	4483	4495	2840
10	Amputation - Lower Extremity	2,873	3414	3651	3543	3488	3441	3212	2742	2621	1639
11	Amputation - Other	352	315	343	312	178	174	147	131	141	105
12	Osteoarthritis	2,032	2436	2481	1386	531	665	472	251	175	89
13	Rheumatoid - Other Arthritis	711	1034	1118	922	597	524	501	421	464	325
14	Cardiac	4,855	6622	7065	6496	4811	4344	4335	4309	4225	2775
15	Pulmonary	2,301	3157	3114	2803	2034	1496	1391	1476	1375	981
16	Pain Syndrome	1,096	2655	3037	2665	1691	1316	1206	1093	944	527
17	Major multiple trauma (no brain)	621	1301	1519	1290	1036	1137	1066	1046	1007	659
18	Major multiple trauma (W/brain or SC)	119	232	310	301	290	319	330	304	313	203
19	Guillian-Barre	163	165	194	160	164	191	182	195	161	94
20	Miscellaneous	9,197	13160	15050	14646	10931	10354	10320	10570	10213	6879
21	Burns	124	75	73	67	98	71	68	59	70	29
50	Short Stay (LOS < 4 days)	2,473									
51	Expired, orthopedic, short stay	22									
52	Expired, orthopedic, not short stay	11									
53	Expired, non-orthopedic, short stay	169									
54	Expired, non-orthopedic, not short stay	84									
All RICs		89,862	117,573	130,868	126,538	108,326	107,217	97,799	87,945	83,277	*YTD

Medicare Patients
RIC Distribution - Percentages

RIC	PF2K N	eRD 2002	eRD 2003	eRD 2004	eRD 2005	eRD 2006	eRD 2007	eRD 2008	eRD 2009	eRD 2010*
01	Stroke	20.00%	17.10%	16.76%	19.65%	21.01%	21.52%	21.52%	22.13%	22.03%
02	Traumatic Brain Injury	1.30%	1.55%	1.77%	2.30%	2.67%	3.03%	3.12%	3.29%	3.25%
03	Nontraumatic Brain Injury	2.28%	2.18%	2.50%	3.37%	3.94%	3.94%	4.10%	4.45%	4.54%
04	Traumatic Spinal Cord Injury	0.72%	0.64%	0.77%	0.83%	0.95%	0.91%	0.94%	1.04%	0.98%
05	Nontraumatic spinal cord	3.37%	3.90%	3.80%	4.04%	4.31%	4.10%	4.10%	4.51%	4.47%
06	Neurological	4.05%	3.97%	4.18%	4.65%	5.55%	5.79%	5.36%	5.73%	5.70%
07	Fracture of Lower Extremity	10.46%	11.65%	12.36%	14.34%	14.94%	15.28%	15.13%	14.29%	13.28%
08	Replacement of Lower Extremity Joint	22.01%	25.12%	25.80%	22.45%	19.64%	16.94%	14.94%	13.11%	12.65%
09	Other Orthopedic	5.54%	4.57%	4.71%	4.52%	4.58%	4.73%	5.10%	5.40%	5.48%
10	Amputation - Lower Extremity	3.20%	2.79%	2.80%	3.22%	3.21%	3.28%	3.12%	3.15%	3.16%
11	Amputation - Other	0.39%	0.26%	0.25%	0.16%	0.16%	0.15%	0.15%	0.17%	0.20%
12	Osteoarthritis	2.26%	1.90%	1.10%	0.49%	0.62%	0.48%	0.29%	0.21%	0.17%
13	Rheumatoid - Other Arthritis	0.79%	0.85%	0.73%	0.55%	0.49%	0.51%	0.48%	0.56%	0.63%
14	Cardiac	5.40%	5.40%	5.13%	4.44%	4.05%	4.43%	4.90%	5.07%	5.36%
15	Pulmonary	2.56%	2.38%	2.22%	1.88%	1.40%	1.42%	1.68%	1.65%	1.89%
16	Pain Syndrome	1.22%	2.32%	2.11%	1.56%	1.23%	1.23%	1.24%	1.13%	1.02%
17	Major multiple trauma (no brain)	0.69%	1.16%	1.02%	0.96%	1.06%	1.09%	1.19%	1.21%	1.27%
18	Major multiple trauma (W/brain or SC)	0.13%	0.24%	0.24%	0.27%	0.30%	0.34%	0.35%	0.38%	0.39%
19	Guillian-Barre	0.18%	0.15%	0.13%	0.15%	0.18%	0.19%	0.22%	0.19%	0.18%
20	Miscellaneous	10.23%	11.50%	11.57%	10.09%	9.66%	10.55%	12.02%	12.26%	13.28%
21	Burns	0.14%	0.06%	0.05%	0.09%	0.07%	0.07%	0.07%	0.08%	0.06%
50	Short Stay (LOS < 4 days)	2.75%								
51	Expired, orthopedic, short stay	0.02%								
52	Expired, orthopedic, not short stay	0.01%								
53	Expired, non-orthopedic, short stay	0.19%								
54	Expired, non-orthopedic, not short stay	0.09%								

*YTD

Medicare Patients
Average Length Of Stay

RIC	PF2K ALOS	eRD 2002	eRD 2003	eRD 2004	eRD 2005	eRD 2006	eRD 2007	eRD 2008	eRD 2009	eRD 2010*
01	Stroke	20.97	16.72	16.80	16.99	16.30	16.28	16.49	16.14	16.13
02	Traumatic Brain Injury	22.46	15.80	15.53	15.91	15.35	15.32	15.54	15.41	15.76
03	Nontraumatic Brain Injury	20.02	14.99	14.29	14.55	14.46	14.16	14.44	14.03	13.86
04	Traumatic Spinal Cord Injury	25.92	19.94	20.08	21.24	20.14	20.42	21.29	21.16	20.95
05	Nontraumatic spinal cord	17.10	14.44	14.29	14.73	14.98	15.08	15.34	15.25	15.41
06	Neurological	17.51	14.03	13.99	14.07	13.86	13.79	14.23	13.88	13.96
07	Fracture of Lower Extremity	15.89	13.18	13.11	13.50	13.10	13.31	13.46	13.48	13.32
08	Replacement of Lower Extremity Joint	11.01	8.87	8.80	9.22	9.25	9.43	9.61	9.72	9.59
09	Other Orthopedic	14.35	11.82	11.80	12.25	11.98	12.01	12.33	12.13	11.93
10	Amputation - Lower Extremity	18.07	14.60	14.38	14.50	14.10	14.60	14.51	14.04	14.02
11	Amputation - Other	17.71	13.32	14.06	14.03	13.18	13.44	12.91	11.65	12.68
12	Osteoarthritis	14.54	12.27	12.14	11.71	11.94	12.72	12.22	12.10	12.45
13	Rheumatoid - Other Arthritis	15.17	12.42	12.61	12.83	11.89	12.47	12.95	12.14	11.96
14	Cardiac	13.85	11.50	11.37	11.68	11.35	11.61	11.80	11.30	11.28
15	Pulmonary	15.75	12.09	12.32	12.77	12.08	12.02	12.38	11.55	11.94
16	Pain Syndrome	13.95	10.84	10.70	10.83	10.90	11.13	11.18	11.17	11.11
17	Major multiple trauma (no brain)	17.14	14.41	14.18	14.39	13.66	13.76	14.38	14.18	13.97
18	Major multiple trauma (W/brain or SC)	22.22	17.78	18.32	20.83	19.18	18.93	19.31	18.62	19.39
19	Guillian-Barre	24.20	21.40	20.02	21.00	20.42	20.12	20.71	19.61	20.04
20	Miscellaneous	15.54	12.89	12.72	13.17	12.83	13.06	12.90	12.89	12.87
21	Burns	16.96	15.64	15.96	16.14	15.99	17.88	15.03	16.10	18.79
50	Short Stay (LOS < 4 days)	2.30								
51	Expired, orthopedic, short stay	7.05								
52	Expired, orthopedic, not short stay	21.91								
53	Expired, non-orthopedic, short stay	7.68								
54	Expired, non-orthopedic, not short stay	26.89								
All RICs		15.62	12.70	12.62	13.29	13.19	13.42	13.66	13.58	13.54

*YTD

Functional Gains
All Payors

RIC	1999 PF2K	2002		2003		2004		2005		2006		2007		2008		2009		2010*		
		FIM Gain	eRD	FIM Gain	eRD	FIM Gain	eRD	FIM Gain	eRD	FIM Gain	eRD	FIM Gain	eRD	FIM Gain	eRD	FIM Gain	eRD	FIM Gain	eRD	FIM Gain
01	21	19.50	19.17	19.59	20.27	20.51	20.98	21.15	21.66	21.93	21.93	21.93	21.93	21.93	21.93	21.93	21.93	21.93	21.93	21.93
02	30	26.86	26.09	25.64	26.27	26.82	26.64	26.11	26.47	26.08	26.08	26.08	26.11	26.47	26.08	26.08	26.11	26.47	26.08	26.08
03	22	19.83	19.21	19.84	20.62	20.52	20.37	21.08	21.89	21.78	21.78	21.78	21.08	21.89	21.78	21.78	21.08	21.89	21.78	21.78
04	21	18.54	18.10	18.59	19.12	19.88	19.82	20.68	21.13	21.23	21.23	19.82	20.68	21.13	21.23	21.23	20.68	21.13	21.23	21.23
05	21	19.13	18.78	18.98	19.92	20.05	20.31	20.32	21.55	21.84	21.84	20.31	20.32	21.55	21.84	21.84	20.31	21.55	21.84	21.84
06	18	16.92	16.88	17.54	18.06	18.83	19.11	20.30	21.50	22.21	22.21	19.11	20.30	21.50	22.21	22.21	19.11	21.50	22.21	22.21
07	20	19.55	19.11	19.87	20.99	21.46	21.88	22.29	22.76	23.27	23.27	21.88	22.29	22.76	23.27	23.27	21.88	22.76	23.27	23.27
08	22	21.45	20.88	21.71	23.02	23.77	24.20	24.51	25.28	26.02	26.02	24.20	24.51	25.28	26.02	26.02	24.51	25.28	26.02	26.02
09	20	18.57	18.16	18.96	20.55	21.27	21.13	22.12	22.76	23.21	23.21	21.13	22.12	22.76	23.21	23.21	21.13	22.76	23.21	23.21
10	16	15.54	15.43	15.95	16.60	16.85	17.51	17.63	18.18	18.64	18.64	17.51	17.63	18.18	18.64	18.64	17.63	18.18	18.64	18.64
11	17	16.88	15.45	17.02	17.91	17.49	17.22	17.36	18.22	20.77	20.77	17.22	17.36	18.22	20.77	20.77	17.36	18.22	20.77	20.77
12	20	19.77	19.49	19.70	20.63	20.34	21.15	19.71	25.26	22.17	22.17	21.15	19.71	25.26	22.17	22.17	19.71	25.26	22.17	22.17
13	20	17.69	16.91	17.99	19.57	19.62	20.44	20.87	21.17	21.78	21.78	20.44	20.87	21.17	21.78	21.78	20.87	21.17	21.78	21.78
14	20	17.91	17.79	18.27	19.36	20.01	20.30	20.61	21.54	21.70	21.70	20.30	20.61	21.54	21.70	21.70	20.61	21.54	21.70	21.70
15	17	16.69	15.77	16.76	17.86	18.42	19.46	19.57	19.86	20.11	20.11	19.46	19.57	19.86	20.11	20.11	19.57	19.86	20.11	20.11
16	19	18.65	18.28	19.14	19.77	19.67	21.41	21.66	22.68	22.51	22.51	21.41	21.66	22.68	22.51	22.51	21.66	22.68	22.51	22.51
17	23	21.67	21.35	21.78	22.76	23.50	23.19	24.19	24.72	25.10	25.10	23.19	24.19	24.72	25.10	25.10	24.19	24.72	25.10	25.10
18	31	29.79	28.46	29.13	30.02	29.74	29.70	29.36	29.32	29.19	29.19	29.70	29.36	29.32	29.19	29.19	29.36	29.32	29.19	29.19
19	25	22.82	23.06	22.78	24.32	23.96	24.64	24.74	25.19	25.10	25.10	24.64	24.74	25.19	25.10	25.10	24.74	25.19	25.10	25.10
20	18	17.03	16.63	17.35	17.77	18.54	19.10	19.23	20.11	20.55	20.55	19.10	19.23	20.11	20.55	20.55	19.23	20.11	20.55	20.55
21	22	26.42	25.71	25.82	25.98	29.28	26.61	27.11	27.56	25.41	25.41	26.61	27.11	27.56	25.41	25.41	27.11	27.56	25.41	25.41

*YTD

Medicare Patients Discharge Destinations

Discharge Destination	2002 eRD	2003 eRD	2004 eRD	2005 eRD	2006 eRD	2007 eRD	2008 eRD	2009 eRD	2010* eRD
01 Home	74.09%	74.26%	74.32%	72.19%	69.96%	69.00%	67.97%	67.21%	67.57%
02 Board and Care	0.46%	0.37%	0.38%	0.43%	0.29%	0.27%	0.22%	0.19%	0.23%
03 Transitional Living	0.07%	0.04%	0.05%	0.07%	0.05%	0.04%	0.04%	0.04%	0.03%
04 Intermediate Care	0.33%	0.26%	0.30%	0.29%	0.20%	0.19%	0.18%	0.15%	0.12%
05 Skilled Nursing Facility	9.02%	9.01%	9.24%	10.02%	10.65%	10.73%	10.92%	11.37%	10.79%
06 Acute unit of own facility	4.05%	4.18%	4.10%	4.30%	4.54%	4.51%	4.36%	4.40%	4.28%
07 Acute unit of another facility	5.25%	5.27%	5.36%	5.92%	5.95%	6.49%	7.00%	7.08%	7.47%
08 Chronic Hospital	0.19%	0.17%	0.16%	0.15%	0.15%	0.17%	0.19%	0.15%	0.17%
09 Rehabilitation Facility	0.13%	0.15%	0.14%	0.13%	0.16%	0.18%	0.15%	0.18%	0.17%
10 Other	0.19%	0.18%	0.19%	0.21%	0.17%	0.15%	0.13%	0.15%	0.16%
11 Died	0.32%	0.26%	0.26%	0.28%	0.26%	0.23%	0.20%	0.21%	0.20%
12 Alternate Level of Care Unit	0.10%	0.06%	0.07%	0.07%	0.09%	0.06%	0.07%	0.08%	0.05%
13 Subacute Setting	3.29%	3.65%	3.44%	3.99%	5.58%	6.11%	6.64%	6.97%	6.96%
14 Assisted Living Residence	2.31%	2.13%	1.98%	1.97%	1.96%	1.87%	1.93%	1.83%	1.79%

*YTD

All Payors - 2009 CoMorbidity Tier Distribution

RIC		PF2K			PF2K			eRD		
		Tier None	Tier 3	Tier 2	Tier 1	Tier None	Tier 3	Tier 2	Tier 1	N
01	Stroke	93.07%	5.66%	1.16%	0.11%	71.07%	22.38%	2.40%	4.15%	3785
02	Traumatic Brain Injury	79.72%	10.60%	9.48%	0.21%	47.35%	15.46%	25.77%	11.42%	718
03	Nontraumatic Brain Injury	75.40%	16.25%	8.20%	0.15%	37.34%	30.70%	22.68%	9.27%	798
04	Traumatic Spinal Cord Injury	88.93%	5.70%	5.27%	0.10%	52.71%	18.35%	16.54%	12.40%	387
05	Nontraumatic spinal cord	88.99%	5.96%	4.86%	0.19%	59.86%	25.48%	11.78%	2.88%	730
06	Neurological	84.85%	7.98%	6.97%	0.20%	53.39%	23.85%	15.04%	7.72%	738
07	Fracture of Lower Extremity	94.45%	3.88%	1.66%	0.01%	73.62%	18.94%	5.87%	1.57%	1975
08	Replacement of Lower Extremity Joint	95.92%	2.24%	1.83%	0.01%	76.60%	20.80%	2.28%	0.32%	1889
09	Other Orthopedic	92.61%	4.90%	2.45%	0.04%	70.91%	22.17%	6.17%	0.76%	794
10	Amputation - Lower Extremity	81.45%	15.68%	2.80%	0.07%	43.41%	34.99%	5.40%	16.20%	463
11	Amputation - Other	72.39%	23.94%	3.66%	0.00%	30.77%	46.15%	3.85%	19.23%	26
12	Osteoarthritis	87.41%	10.27%	2.32%	0.00%	55.56%	29.63%	14.81%	0.00%	27
13	Rheumatoid - Other Arthritis	90.74%	6.98%	2.14%	0.14%	60.00%	27.14%	8.57%	4.29%	70
14	Cardiac	85.25%	9.14%	5.52%	0.09%	50.69%	35.00%	9.14%	5.17%	580
15	Pulmonary	89.18%	5.08%	5.65%	0.08%	59.07%	21.94%	12.66%	6.33%	237
16	Pain Syndrome	91.93%	5.60%	2.39%	0.09%	71.84%	21.26%	6.32%	0.57%	174
17	Major multiple trauma (no brain)	92.93%	5.05%	1.95%	0.07%	70.37%	21.08%	4.84%	3.70%	351
18	Major multiple trauma (W/brain or SC)	83.53%	8.34%	8.13%	0.00%	48.00%	10.00%	16.80%	25.20%	250
19	Guillian-Barre	80.47%	10.79%	8.16%	0.58%	61.11%	12.96%	14.81%	11.11%	54
20	Miscellaneous	77.33%	15.92%	6.41%	0.33%	38.43%	35.27%	15.23%	11.06%	1582
21	Burns	90.23%	4.65%	5.12%	0.00%	20.83%	33.33%	20.83%	25.00%	24
										15652

Medicare Patients
Case Mix Index

RIC	PF2K* 1999 CMI	eRD 2002 CMI	eRD 2003 CMI	eRD 2004 CMI	eRD 2005 CMI	eRD 2006 CMI	eRD 2007 CMI	eRD 2008 CMI	eRD 2009 CMI	eRD 2010* CMI	
01	Stroke	1.43	1.48	1.50	1.53	1.55	1.57	1.59	1.60	1.59	1.57
02	Traumatic Brain Injury	1.41	1.36	1.40	1.39	1.48	1.48	1.50	1.50	1.51	1.52
03	Nontraumatic Brain Injury	1.30	1.27	1.31	1.31	1.34	1.37	1.39	1.40	1.40	1.41
04	Traumatic Spinal Cord Injury	1.65	1.74	1.80	1.84	1.86	1.92	2.04	2.04	2.08	2.12
05	Nontraumatic spinal cord	1.07	1.16	1.18	1.21	1.24	1.30	1.32	1.37	1.41	1.41
06	Neurological	1.03	1.11	1.13	1.13	1.15	1.19	1.20	1.23	1.29	1.31
07	Fracture of Lower Extremity	0.97	1.08	1.10	1.11	1.14	1.16	1.18	1.20	1.23	1.23
08	Replacement of Lower Extremity Joint	0.62	0.70	0.70	0.71	0.73	0.76	0.77	0.79	0.83	0.84
09	Other Orthopedic	0.84	0.94	0.96	0.97	0.99	1.03	1.04	1.06	1.09	1.08
10	Amputation - Lower Extremity	1.15	1.26	1.29	1.29	1.31	1.33	1.35	1.36	1.40	1.41
11	Amputation - Other	1.03	1.18	1.19	1.28	1.25	1.27	1.25	1.23	1.30	1.27
12	Osteoarthritis	0.84	0.94	0.97	0.97	0.97	1.01	1.04	1.05	1.14	1.09
13	Rheumatoid - Other Arthritis	0.94	0.99	0.99	1.02	1.05	1.08	1.11	1.12	1.11	1.15
14	Cardiac	0.77	0.95	0.98	0.99	1.00	1.03	1.04	1.07	1.08	1.10
15	Pulmonary	0.99	1.06	1.09	1.10	1.12	1.14	1.17	1.15	1.16	1.20
16	Pain Syndrome	0.80	0.85	0.86	0.87	0.88	0.90	0.92	0.92	0.95	0.97
17	Major multiple trauma (no brain)	1.07	1.17	1.16	1.17	1.23	1.24	1.29	1.30	1.34	1.33
18	Major multiple trauma (W/brain or SC)	1.58	1.66	1.78	1.73	1.80	1.89	1.86	1.92	1.91	1.92
19	Guillian-Barre	1.64	1.88	1.91	1.94	1.89	1.98	1.88	2.03	2.06	2.27
20	Miscellaneous	0.97	1.08	1.08	1.10	1.12	1.15	1.18	1.19	1.23	1.24
21	Burns	1.36	1.65	1.58	1.60	1.70	1.66	1.69	1.77	1.95	2.13
50	Short Stay (LOS < 4 days)	0.17									
51	Expired, orthopedic, short stay	0.43									
52	Expired, orthopedic, not short stay	1.24									
53	Expired, non-orthopedic, short stay	0.54									
54	Expired, non-orthopedic, not short stay	1.71									
	All RICs	1.00	1.06	1.07	1.08	1.14	1.19	1.23	1.25	1.29	1.29

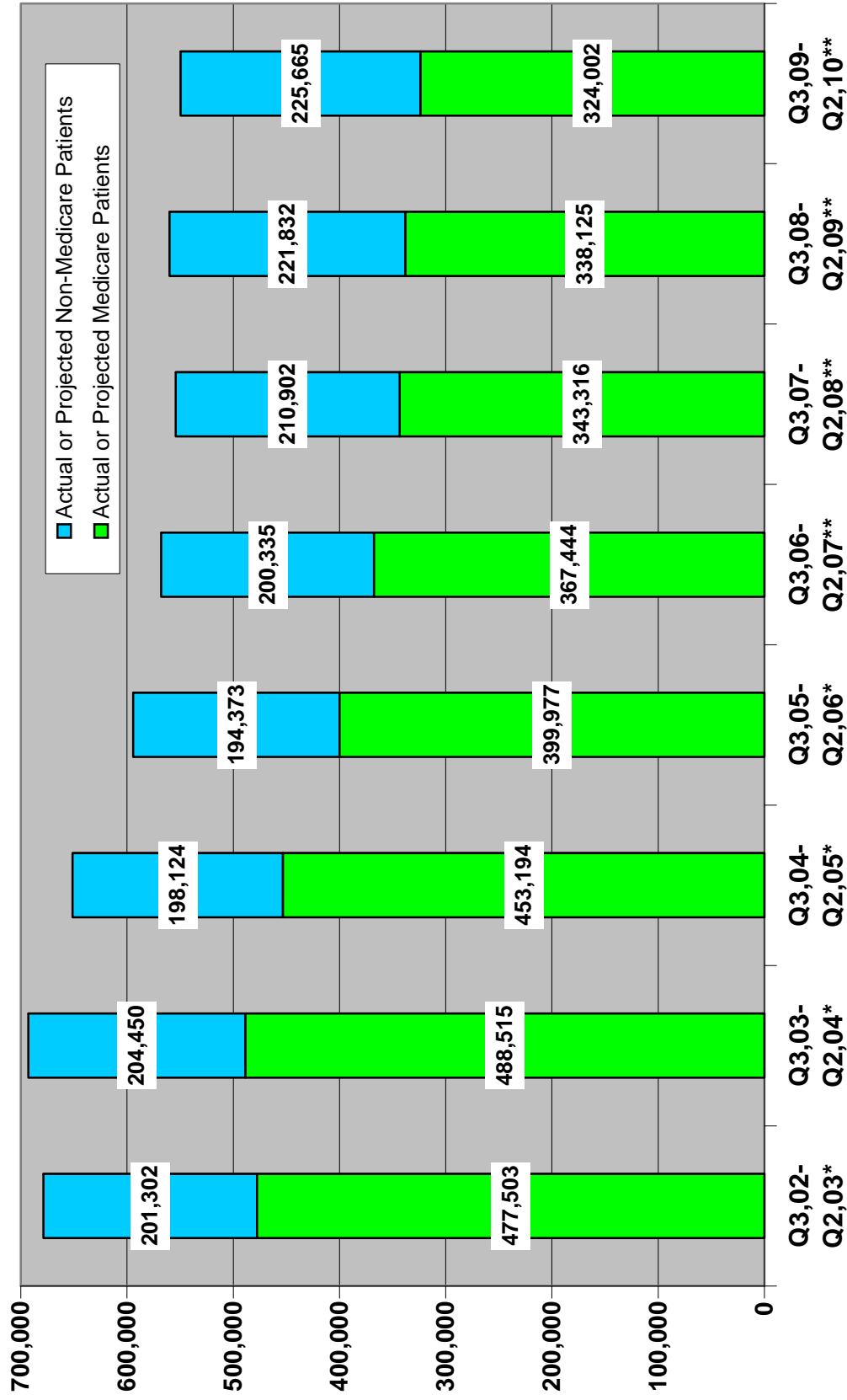
*YTD

2010* Medicare RIC Populations by Region

RIC	New England		Middle Atlantic		South Atlantic		East North Central		East South Central		West North Central		West South Central		Mountain		Pacific	
	#	%	#	%	#	%	#	%	#	%	#	%	#	%	#	%	#	%
01 - Stroke	545	22.54%	1884	21.85%	2145	24.96%	2316	21.60%	1111	22.68%	706	28.06%	1796	17.85%	119	25.00%	789	22.61%
02 - TBI	84	3.47%	297	3.44%	293	3.41%	386	3.60%	147	3.00%	94	3.74%	266	2.64%	15	3.15%	102	2.92%
03 - NTBI	98	4.05%	362	4.20%	399	4.64%	638	5.95%	171	3.49%	144	5.72%	285	2.83%	17	3.57%	239	6.85%
04 - TSCI	33	1.36%	87	1.01%	103	1.20%	119	1.11%	51	1.04%	32	1.27%	56	0.56%	5	1.05%	23	0.66%
05 - NTSCI	95	3.93%	261	3.03%	479	5.57%	542	5.05%	192	3.92%	111	4.41%	393	3.91%	16	3.36%	225	6.45%
06 - Neuro	142	5.87%	379	4.40%	372	4.33%	765	7.13%	258	5.27%	135	5.37%	719	7.15%	22	4.62%	161	4.61%
07 - FracLE	314	12.99%	1017	11.79%	992	11.54%	1166	10.87%	797	16.27%	148	5.88%	1876	18.65%	57	11.97%	512	14.67%
08 - Reple	182	7.53%	1827	21.19%	875	10.18%	1120	10.44%	531	10.84%	156	6.20%	1408	13.99%	55	11.55%	398	11.40%
09 - Ortho	152	6.29%	548	6.36%	381	4.43%	598	5.58%	246	5.02%	104	4.13%	671	6.67%	39	8.19%	101	2.89%
10 - AMPLE	53	2.19%	222	2.57%	348	4.05%	330	3.08%	214	4.37%	91	3.62%	285	2.83%	13	2.73%	83	2.38%
11 - AMP-NLE	3	0.12%	15	0.17%	24	0.28%	26	0.24%	9	0.18%	4	0.16%	16	0.16%	1	0.21%	7	0.20%
12 - OsteoA	2	0.08%	10	0.12%	3	0.03%	16	0.15%	6	0.12%	3	0.12%	44	0.44%	1	0.21%	4	0.11%
13 - Rheuma	13	0.54%	17	0.20%	20	0.23%	163	1.52%	13	0.27%	7	0.28%	61	0.61%	2	0.42%	29	0.83%
14 - Cardiac	187	7.73%	705	8.18%	506	5.89%	511	4.77%	184	3.76%	129	5.13%	402	4.00%	9	1.89%	142	4.07%
15 - Pulmonary	80	3.31%	267	3.10%	124	1.44%	155	1.45%	135	2.76%	20	0.79%	134	1.33%	3	0.63%	63	1.81%
16 - Pain	44	1.82%	25	0.29%	64	0.74%	94	0.88%	32	0.65%	34	1.35%	175	1.74%	23	4.83%	36	1.03%
17 - MMT-NBSCI	52	2.15%	71	0.82%	103	1.20%	106	0.99%	99	2.02%	14	0.56%	157	1.56%	7	1.47%	50	1.43%
18 - MMT-BSCI	13	0.54%	29	0.34%	47	0.55%	34	0.32%	21	0.43%	5	0.20%	39	0.39%	5	1.05%	10	0.29%
19 - GB	4	0.17%	16	0.19%	22	0.26%	20	0.19%	8	0.16%	6	0.24%	11	0.11%	1	0.21%	6	0.17%
20 - Misc	319	13.19%	584	6.77%	1287	14.98%	1610	15.01%	666	13.60%	571	22.69%	1266	12.58%	66	13.87%	510	14.61%
21 - Burns	3	0.12%	0	0.00%	7	0.08%	9	0.08%	7	0.14%	2	0.08%	1	0.01%	0	0.00%	0	0.00%
All	2418		8623		8594		10724		4898		2516		10061		476		3490	

*YTD

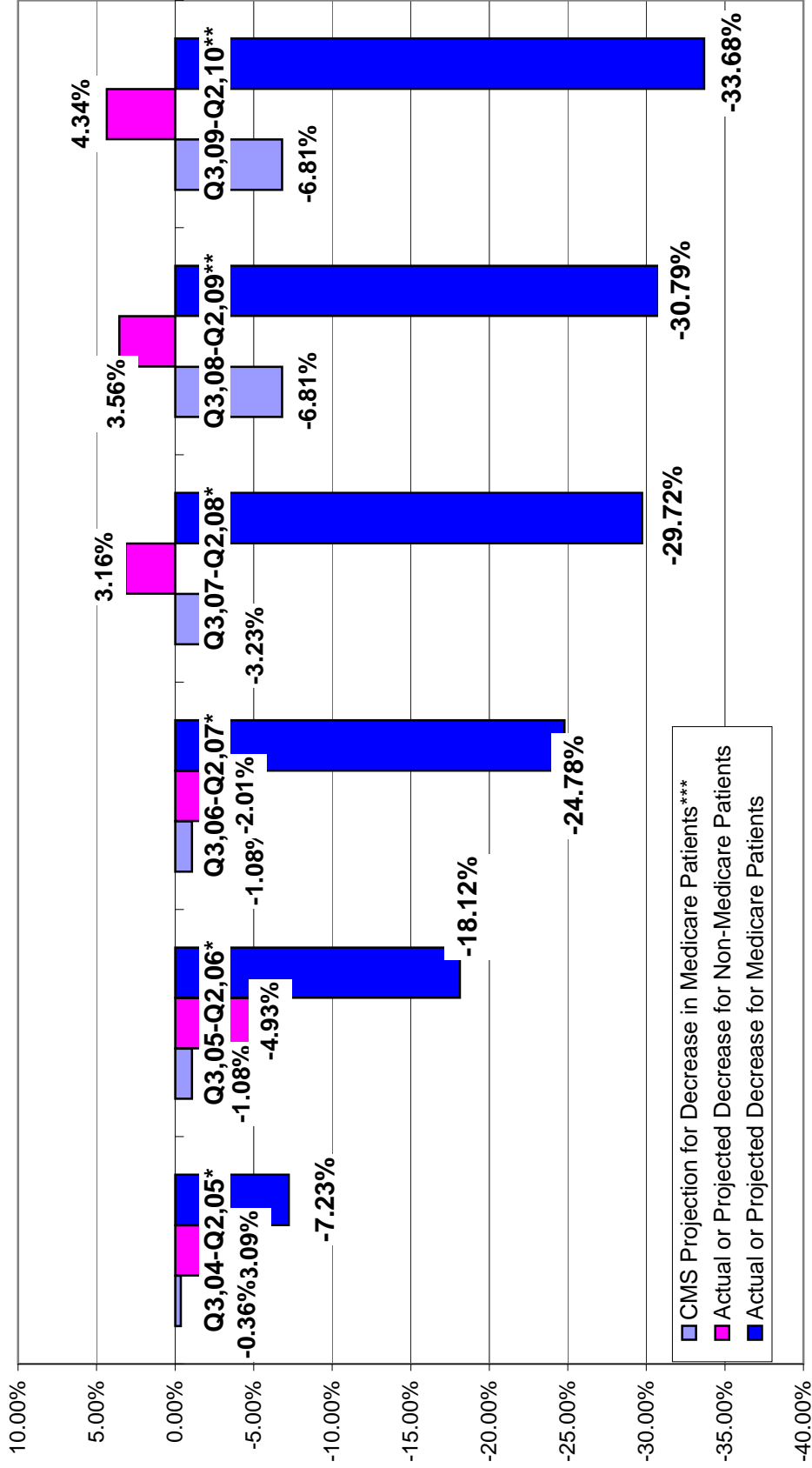
Inpatient Acute Medical Rehabilitation Discharges Per 12 Month Periods Updated July 27, 2010



* Actual patient volume calculated from data supplied by UDSmr and eRehabData for 70% of patients.

** Projection of patients (both Medicare and Non-Medicare) accessing IRFs based on actual patient volume for 131 IRFs (20% of discharges nationally) in eRehabData for Q4 2009

Patient Reductions in Inpatient Rehabilitation Facilities Required to Meet May 7th 2004 65% Rule Compared to July 1, 2003 - June 30, 2004 as Percentage of Discharges by Payer
Updated July 27, 2010

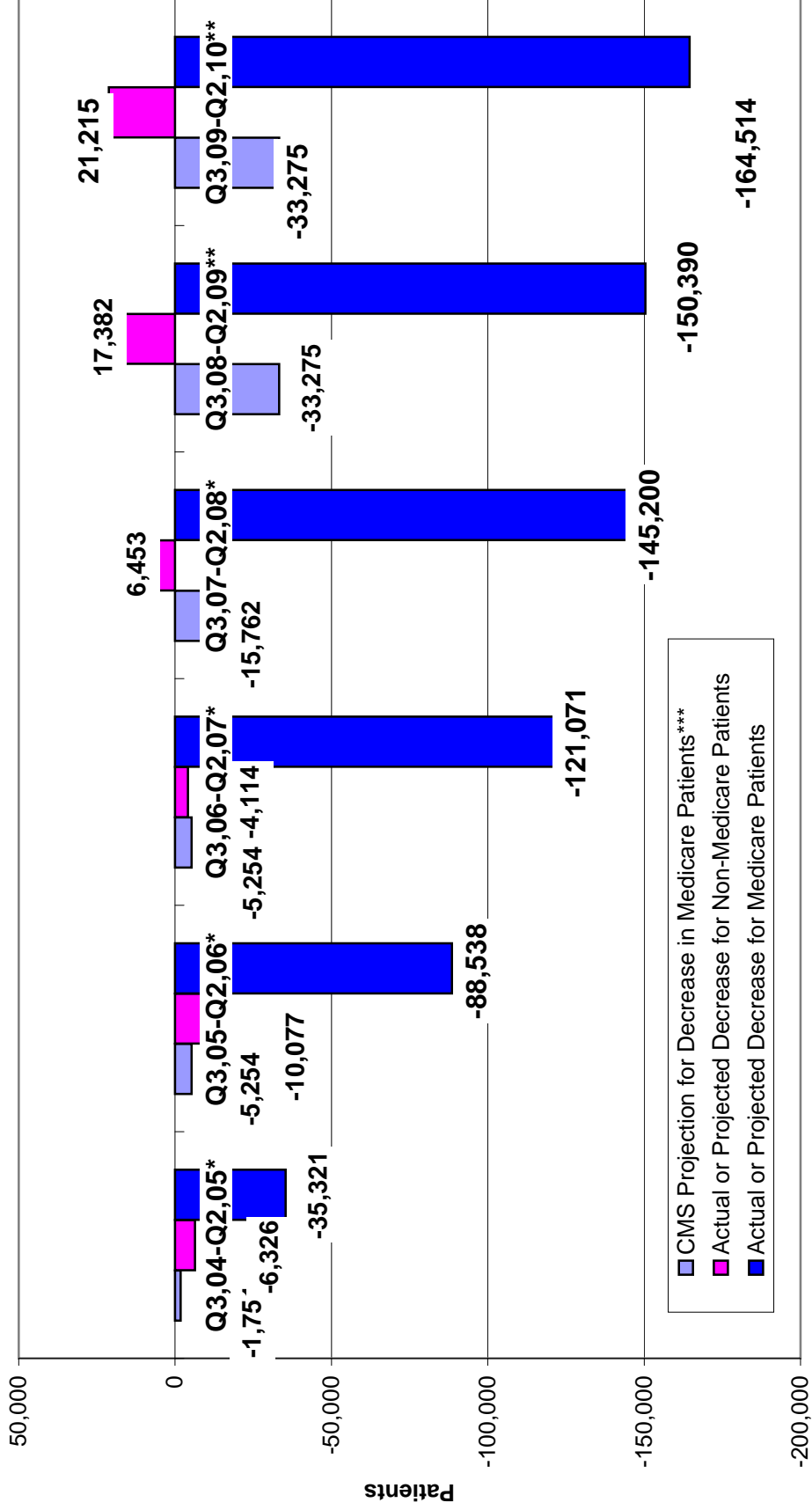


*Actual patient volume calculated from data supplied by UDsmr and eRehabData for 70% of patients.

**Projection of patients (both Medicare and Non-Medicare) accessing IRFs based on actual patient volume for 131 IRFs (20% of discharges nationally) in eRehabData for Q4 2009

***CMS projections based on May 7th, 2004 Federal Register page 25772 by dividing total estimated savings by the projected per discharge savings of \$5,710

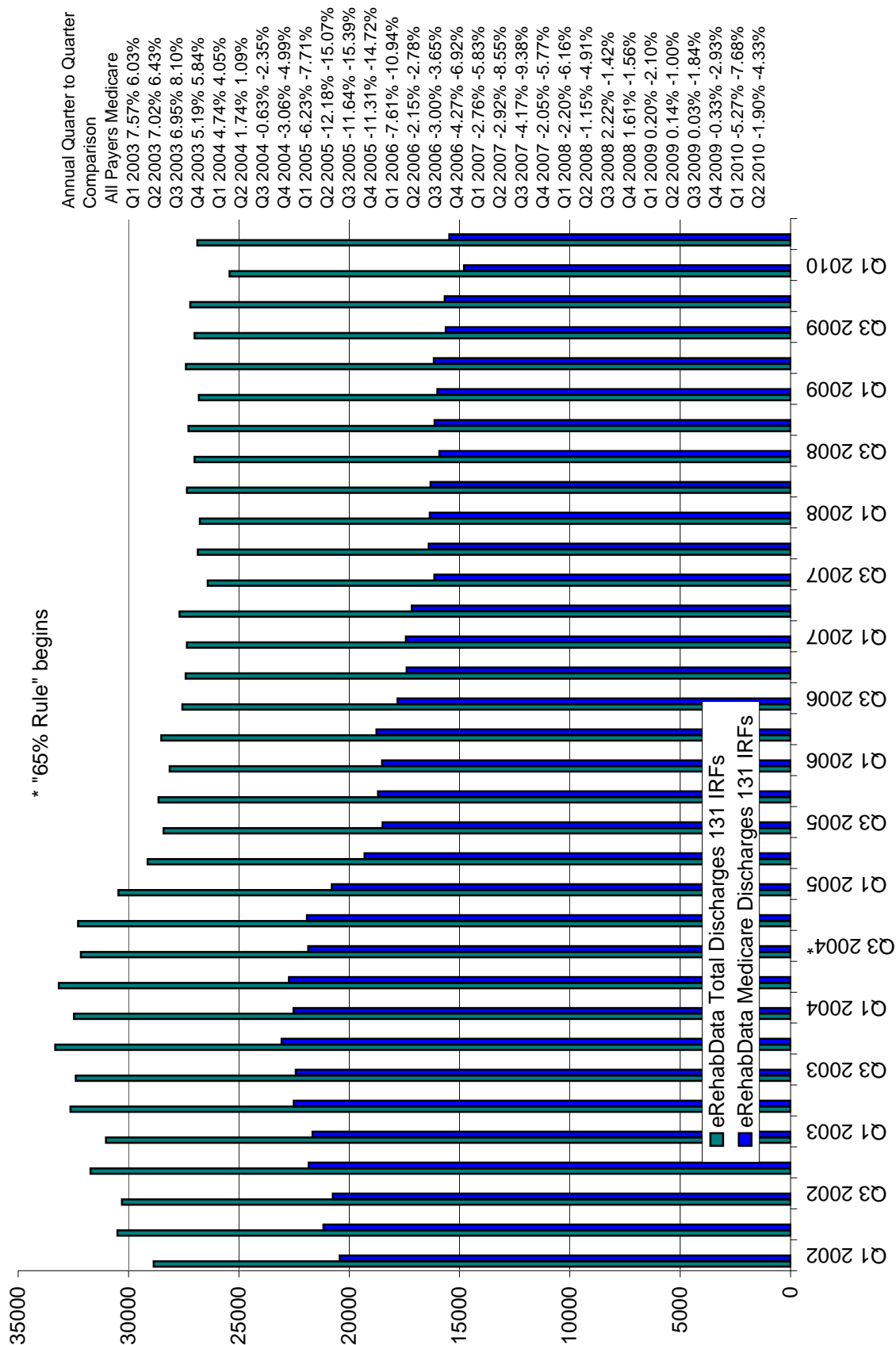
Patient Reductions in Inpatient Rehabilitation Facilities Required to Meet May 7th 2004 65% Rule Compared to July 1, 2003 - June 30, 2004
Updated July 27, 2010



* Actual patient volume calculated from data supplied by UDSmr and eRehabData for 70% of patients.
 ** Projection of patients (both Medicare and Non-Medicare) accessing IRFs based on actual patient volume for 131 IRFs (20% of discharges nationally) in eRehabData for Q4 2009
 *** CMS projections based on May 7th, 2004 Federal Register page 25772 by dividing total estimated savings by the projected per discharge savings of \$5,710

Patient Counts in Inpatient Rehabilitation Facilities by Quarter in eRehabData

Updated July 27, 2010



Proposed 60% Rule Compliance - "Conditional"

	All Payors 2002	All Payors 2003	All Payors 2004	All Payors 2005	All Payors 2006	All Payors 2007	All Payors 2008	All Payors 2009	All Payors 2010*	Medicare 2002	Medicare 2003	Medicare 2004	Medicare 2005	Medicare 2006	Medicare 2007	Medicare 2008	Medicare 2009	Medicare 2010*
Nation	46.60%	46.18%	49.53%	59.34%	63.92%	65.76%	65.70%	66.96%	66.57%	42.82%	42.17%	45.06%	55.12%	59.82%	61.38%	61.18%	62.64%	61.74%
New England	40.51%	40.27%	45.88%	56.57%	65.10%	63.20%	59.37%	64.53%	65.23%	36.86%	35.02%	41.92%	52.22%	61.64%	59.43%	55.16%	60.94%	61.79%
Middle Atlantic	39.19%	39.92%	45.38%	58.23%	61.54%	63.79%	65.49%	65.65%	65.48%	36.97%	36.89%	41.22%	54.49%	56.99%	58.60%	60.48%	60.71%	59.90%
South Atlantic	47.93%	47.99%	50.01%	61.47%	64.65%	68.35%	67.31%	68.54%	68.02%	44.64%	44.34%	45.40%	58.11%	60.60%	64.43%	63.10%	64.55%	62.72%
East North Central	51.55%	50.10%	54.42%	61.18%	66.14%	67.51%	66.84%	67.67%	67.03%	45.70%	44.29%	48.60%	55.53%	61.44%	62.51%	61.00%	62.22%	61.21%
East South Central	49.06%	48.42%	51.85%	58.67%	64.49%	67.68%	67.89%	68.48%	67.67%	44.97%	43.89%	47.72%	54.46%	60.08%	63.44%	64.01%	64.97%	64.01%
West North Central	53.23%	51.07%	52.68%	58.06%	59.89%	61.38%	60.52%	64.87%	66.40%	47.92%	45.86%	47.41%	51.15%	54.18%	54.74%	53.40%	58.82%	59.18%
West South Central	42.72%	42.42%	43.83%	56.55%	63.23%	62.91%	63.52%	65.82%	64.97%	40.17%	40.19%	40.94%	53.97%	60.69%	59.65%	60.29%	62.75%	62.01%
Mountain	47.30%	51.12%	51.63%	61.93%	62.58%	69.07%	69.92%	69.58%	68.54%	41.21%	42.77%	44.75%	54.88%	54.89%	63.48%	66.96%	67.08%	61.34%
Pacific	56.08%	55.35%	57.47%	61.12%	64.41%	67.96%	71.20%	67.92%	67.71%	52.19%	52.13%	53.07%	57.80%	61.39%	64.81%	68.61%	63.91%	63.38%

*YTD

Proposed 60% Rule Compliance - "Presumptive"

	All Payors 2002	All Payors 2003	All Payors 2004	All Payors 2005	All Payors 2006	All Payors 2007	All Payors 2008	All Payors 2009	All Payors 2010*	Medicare 2002	Medicare 2003	Medicare 2004	Medicare 2005	Medicare 2006	Medicare 2007	Medicare 2008	Medicare 2009	Medicare 2010*
Nation	64.97%	64.59%	66.44%	73.48%	77.80%	78.55%	77.71%	77.57%	76.77%	61.62%	61.06%	62.68%	70.14%	75.23%	75.79%	74.73%	74.55%	73.28%
New England	57.50%	55.31%	57.55%	65.80%	75.81%	74.75%	74.15%	74.11%	73.33%	53.51%	49.15%	52.72%	61.49%	72.85%	72.11%	71.17%	71.04%	70.68%
Middle Atlantic	63.72%	63.65%	67.36%	77.69%	80.11%	80.01%	79.62%	78.12%	77.05%	61.18%	60.52%	63.82%	74.93%	78.05%	77.50%	77.60%	76.26%	74.51%
South Atlantic	68.23%	68.16%	67.61%	75.47%	77.17%	79.40%	77.68%	77.68%	76.42%	66.32%	65.54%	63.98%	73.03%	74.52%	76.62%	74.42%	74.12%	71.89%
East North Central	66.78%	66.38%	69.13%	73.63%	78.78%	79.61%	77.67%	78.43%	77.83%	61.97%	61.79%	64.89%	69.56%	76.02%	76.55%	73.72%	74.76%	73.60%
East South Central	64.92%	65.25%	67.98%	73.28%	77.47%	78.54%	77.94%	76.95%	77.24%	61.29%	61.32%	64.31%	69.97%	74.32%	75.75%	74.88%	73.62%	74.03%
West North Central	70.50%	68.56%	70.25%	72.03%	74.07%	75.24%	73.20%	73.92%	76.52%	66.39%	64.32%	66.38%	66.98%	69.65%	69.97%	66.96%	68.65%	70.03%
West South Central	58.86%	58.71%	60.43%	70.25%	77.33%	77.45%	77.24%	77.68%	75.62%	56.15%	56.86%	58.24%	68.28%	75.87%	75.77%	75.18%	75.56%	73.35%
Mountain	62.80%	65.42%	62.13%	70.62%	77.48%	79.03%	80.63%	82.22%	81.30%	55.90%	58.36%	55.45%	63.82%	72.26%	74.40%	77.95%	79.98%	77.10%
Pacific	71.49%	69.87%	70.62%	71.48%	74.52%	76.74%	80.67%	78.02%	77.79%	68.81%	67.47%	67.36%	68.68%	72.67%	74.61%	79.51%	75.26%	75.04%

*YTD

Appeals Data: eRehabData.com

Upheld Appeal (Hospital Wins)

Reason for Successful Appeal

Appeal Organization	Appeal Count	Intensity	Necessity	Supervision	Nursing	Therapy	Multidisciplinary	Care Plan	Improvement	Goals	Billing Code
Blue Cross Blue Shield of Georgia	8	0	0	0	0	0	0	0	0	0	0
Cahaba GBA-Alabama	3	1	3	0	0	0	0	0	0	0	0
First Coast Service Options	25	1	2	1	1	1	1	1	1	1	1
Highmark Medicare Services Pennsylvania	7	0	0	0	0	0	0	0	0	0	0
Mutual of Omaha	102	32	64	25	25	25	25	25	25	25	0
NGS/AdminiStar Federal Inc-Illinois	31	2	3	5	2	0	5	0	1	0	0
NGS/AdminiStar Federal Inc-Kentucky	1	0	0	0	1	0	0	0	0	0	0
NGS - Michigan	2	0	0	1	1	0	0	0	0	0	0
NGS - Michigan	2	0	2	0	0	0	0	0	0	0	0
Palmetto GBA-North Carolina	63	1	63	0	0	0	0	0	0	0	0
Connolly Consulting	1	0	0	0	0	0	0	0	0	0	0
Not Designated	2	1	1	1	1	1	1	1	1	1	0
First Coast	25	12	9	4	4	0	1	0	0	0	0
Maximus	20	6	20	5	3	4	5	3	3	3	0
Arlington, VA	12	2	12	8	8	8	8	8	8	8	1
Cleveland, OH	79	62	34	34	34	30	30	30	30	30	0
Irvine, CA	12	12	12	12	12	12	11	7	7	7	0
Miami, FL	23	13	23	1	1	0	0	0	1	1	0
Not Designated	1	1	1	1	1	1	1	1	1	1	0
Total	419	146	249	98	94	82	88	76	78	77	2

Denied Appeal (Hospital Loses)

Reason for Denial

Appeal Organization	Appeal Count	Technical	Intensity	Necessity	Supervision	Nursing	Therapy	Multidisciplinary	Care Plan	Improvement	Goals	Billing Code
Cahaba GBA-Alabama	7	7	0	0	0	0	0	0	0	0	0	0
Highmark Medicare Services Pennsylvania	1	0	1	1	0	0	0	0	0	0	0	0
NGS/AdminiStar Federal Inc-Illinois	8	0	6	1	3	1	0	3	0	1	1	0
NGS-Michigan	1	0	0	0	1	1	0	0	0	0	0	0
NGS-Virginia and West Virginia	33	1	15	0	0	0	0	0	0	0	0	0
Noridian Administrative Services-Idaho	1	0	0	0	0	0	0	0	0	0	0	0
Palmetto GBA-North Carolina	1	1	0	0	0	0	0	0	0	0	0	0
First Coast	3	0	3	0	0	0	0	0	0	0	0	0
Maximus	54	3	1	1	2	2	1	0	0	0	0	0
Arlington, VA	13	0	3	1	4	2	0	0	0	0	0	0
Cleveland, OH	9	0	9	0	2	2	0	0	0	0	0	0
MAC	4	0	4	0	4	3	0	0	0	0	0	0
Total	135	12	42	4	16	11	1	3	0	1	1	0

Appeals Data (ICG 08.11, 08.51, 08.61): eRehabData.com

Reason for Successful Appeal

Upheld Appeal (Hospital Wins)

Appeal Organization	Appeal Count	Technical	Intensity	Necessity	Supervision	Nursing	Therapy	Multidisciplinary	Care Plan	Improvement	Goals	Billing Code
FI Blue Cross Blue Shield of Georgia	4		0	0	0	0	0	0	0	0	0	0
FI First Coast Service Options	19		1	1	1	1	1	1	1	1	1	0
FI Highmark Medicare Services Pennsylvania	1		0	0	0	0	0	0	0	0	0	0
FI Mutual of Omaha	29		1	16	0	0	0	0	0	0	0	0
FI NGS/AdminiStar Federal Inc-Illinois	5		0	3	2	0	0	0	0	0	0	0
FI NGS/AdminiStar Federal Inc-Kentucky	1		0	0	0	1	0	0	0	0	0	0
FI NGS/AdminiStar Michigan	2		0	0	1	1	0	0	0	0	0	0
FI Palmetto GBA-North Carolina	7		0	7	0	0	0	0	0	0	0	0
FI Not Designated	1		0	0	0	0	0	0	0	0	0	0
QIC First Coast	21		11	6	4	4	0	1	0	0	0	0
QIC Maximus	1		0	1	1	1	1	1	1	1	1	0
ALJ Arlington, VA	11		2	11	7	7	7	7	7	7	7	1
ALJ Cleveland, OH	59		51	17	18	18	14	14	14	14	14	0
ALJ Irvine, CA	9		9	9	9	9	9	8	4	4	4	0
ALJ Miami, FL	7		5	7	1	1	0	0	0	1	1	0
Total	177		80	78	44	43	32	32	27	28	28	2

Denied Appeal (Hospital Loses)

Reason for Denial

Appeal Organization	Appeal Count	Technical	Intensity	Necessity	Supervision	Nursing	Therapy	Multidisciplinary	Care Plan	Improvement	Goals	Billing Code
FI Cahaba GBA-Alabama	5	5	0	0	0	0	0	0	0	0	0	0
FI NGS/AdminiStar Federal Inc-Illinois	4	0	3	1	1	1	0	2	0	1	1	0
FI NGS-Michigan	1	0	0	0	1	1	0	0	0	0	0	0
FI NGS-Virginia and West Virginia	29	1	13	0	0	0	0	0	0	0	0	0
FI Noridian Administrative Services-Idaho	1	0	0	0	0	0	0	0	0	0	0	0
QIC First Coast	3	0	3	0	0	0	0	0	0	0	0	0
QIC Maximus	41	3	0	0	2	2	1	0	0	0	0	0
ALJ Arlington, VA	8	0	3	1	4	2	0	0	0	0	0	0
ALJ Cleveland, OH	9	0	9	0	2	2	0	0	0	0	0	0
MAC	4	0	4	0	4	3	0	0	0	0	0	0
Total	105	9	35	2	14	11	1	2	0	1	1	0

Appeals Data: eRehabData.com

		All Appeals			Active Appeals			Closed Appeals			
		Count	Pct	Count	Pct	Count	Pct	Upheld Count	Pct of Closed	Denied Count	Pct of Closed
Appeal Organization		Count	Pct	Count	Pct	Count	Pct	Count	Pct	Count	Pct
FI	Blue Cross Blue Shield of Georgia	40	5.2%	32	6.8%	8	2.7%	8	100.0%	0	0.0%
FI	Cahaba GBA-Alabama	14	1.8%	4	0.9%	10	3.4%	3	30.0%	7	70.0%
FI	Cahaba GBA-Iowa	1	0.1%	1	0.2%	0	0.0%	0	0.0%	0	0.0%
FI	First Coast Service Options	83	10.8%	58	12.3%	25	8.4%	25	100.0%	0	0.0%
FI	Highmark Medicare Services Pennsylvania	13	1.7%	5	1.1%	8	2.7%	7	87.5%	1	12.5%
FI	Mutual of Omaha	123	16.0%	21	4.5%	102	34.2%	102	100.0%	0	0.0%
FI	National Gov't Services/AdminiStar Federal Inc-Illinois	52	6.8%	13	2.8%	39	13.1%	31	79.5%	8	20.5%
FI	National Gov't Services/AdminiStar Federal Inc-Kentucky	1	0.1%	0	0.0%	1	0.3%	1	100.0%	0	0.0%
FI	National Gov't Services-Michigan	13	1.7%	10	2.1%	3	1.0%	2	66.7%	1	33.3%
FI	National Gov't Services-Virginia and West Virginia	249	32.4%	214	45.5%	35	11.7%	2	5.7%	33	94.3%
FI	National Gov't Services-Wisconsin	1	0.1%	1	0.2%	0	0.0%	0	0.0%	0	0.0%
FI	Noridian Administrative Services-Idaho	1	0.1%	0	0.0%	1	0.3%	0	0.0%	1	100.0%
FI	Palmetto GBA-North Carolina	172	22.4%	108	23.0%	64	21.5%	63	98.4%	1	1.6%
	<i>Not Designated</i>	5	0.7%	3	0.6%	2	0.7%	2	100.0%	0	0.0%
	Subtotal	768		470		298		246	82.6%	52	17.4%
RAC	Connolly Consulting	1	0.6%	0	0.0%	1	100.0%	1	100.0%	0	0.0%
RAC	Diversified Collection Services, Inc.	1	0.6%	1	0.6%	0	0.0%	0	0.0%	0	0.0%
RAC	HealthData Insights	152	98.1%	152	98.7%	0	0.0%	0	0.0%	0	0.0%
RAC	PRG-Shultz International, Inc.	1	0.6%	1	0.6%	0	0.0%	0	0.0%	0	0.0%
	Subtotal	155		154		1		1	100.0%	0	0.0%
QIC	First Coast	35	12.6%	7	4.0%	28	27.5%	25	89.3%	3	10.7%
QIC	Maximus	243	87.4%	169	96.0%	74	72.5%	20	27.0%	54	73.0%
	Subtotal	278		176		102		45	44.1%	57	55.9%
ALJ	Arlington, VA	65	26.4%	40	41.2%	25	16.8%	12	48.0%	13	52.0%
ALJ	Cleveland, OH	91	37.0%	3	3.1%	88	59.1%	79	89.8%	9	10.2%
ALJ	Irvine, CA	27	11.0%	15	15.5%	12	8.1%	12	100.0%	0	0.0%
ALJ	Miami, FL	62	25.2%	39	40.2%	23	15.4%	23	100.0%	0	0.0%
	<i>Not Designated</i>	1	0.4%	0	0.0%	1	0.7%	1	100.0%	0	0.0%
	Subtotal	246		97		149		127	85.2%	22	14.8%
MAC	Nebraska District Court	8		4		4		0	0.0%	4	100.0%
Federal	Nebraska District Court	14		14		0		0	0.0%	0	0.0%
	Total Count	1469		915		554		419	75.6%	135	24.4%
	Percent of Total			62.3%		37.7%		75.6%		24.4%	

Appeal Organization	All Appeals			Active Appeals			Closed Appeals					
	Count	Pct		Count	Pct		Count	Pct				
							Upheld	Denied	Pct of			
FI Blue Cross Blue Shield of Georgia	9	2.3%		5	1.8%		4	3.7%	4	100.0%	0	0.0%
FI Cahaba GBA-Alabama	7	1.8%		2	0.7%		5	4.6%	0	0.0%	5	100.0%
FI Cahaba GBA-Iowa	1	0.3%		1	0.4%		0	0.0%	0	0.0%	0	0.0%
FI First Coast Service Options	72	18.3%		53	18.6%		19	17.4%	19	100.0%	0	0.0%
FI Highmark Medicare Services Pennsylvania	4	1.0%		3	1.1%		1	0.9%	1	100.0%	0	0.0%
FI Mutual of Omaha	42	10.7%		13	4.6%		29	26.6%	29	100.0%	0	0.0%
FI National Gov't Services/AdminiStar Federal Inc-Illinois	12	3.0%		3	1.1%		9	8.3%	5	55.6%	4	44.4%
FI National Gov't Services/AdminiStar Federal Inc-Kentucky	1	0.3%		0	0.0%		1	0.9%	1	100.0%	0	0.0%
FI National Gov't Services-Michigan	12	3.0%		9	3.2%		3	2.8%	2	66.7%	1	33.3%
FI National Gov't Services-Virginia and West Virginia	211	53.6%		182	63.9%		29	26.6%	0	0.0%	29	100.0%
FI National Gov't Services-Wisconsin	1	0.3%		1	0.4%		0	0.0%	0	0.0%	0	0.0%
FI Noridian Administrative Services-Idaho	1	0.3%		0	0.0%		1	0.9%	0	0.0%	1	100.0%
FI Palmetto GBA-North Carolina	18	4.6%		11	3.9%		7	6.4%	7	100.0%	0	0.0%
FI Not Designated	3	0.8%		2	0.7%		1	0.9%	1	100.0%	0	0.0%
Subtotal	394			285			109		69	63.3%	40	36.7%
RAC HealthData Insights	38	100.0%		38	100.0%		0	0.0%	0	0.0%	0	0.0%
Subtotal	38			38			0		0	0.0%	0	0.0%
QIC First Coast	31	16.2%		7	5.6%		24	36.4%	21	87.5%	3	12.5%
QIC Maximus	160	83.8%		118	94.4%		42	63.6%	1	2.4%	41	97.6%
Subtotal	191			125			66		22	33.3%	44	66.7%
ALJ Arlington, VA	53	34.2%		34	65.4%		19	18.4%	11	57.9%	8	42.1%
ALJ Cleveland, OH	70	45.2%		2	3.8%		68	66.0%	59	86.8%	9	13.2%
ALJ Irvine, CA	13	8.4%		4	7.7%		9	8.7%	9	100.0%	0	0.0%
ALJ Miami, FL	19	12.3%		12	23.1%		7	6.8%	7	100.0%	0	0.0%
Subtotal	155			52			103		86	83.5%	17	16.5%
MAC	8			4			4		0	0.0%	4	100.0%
Federal Nebraska District Court	4			4			0		0	0.0%	0	0.0%
Total Count	790			508			282		177	62.8%	105	37.2%
Percent of Total				64.3%			35.7%		62.8%		37.2%	

IGC		All Appeals		Active Appeals		Closed Appeals	
		Count	Pct	Count	Pct	Count	Pct
01.1	Stroke: Left body involvement (right brain)	65	4.4%	40	4.4%	25	4.5%
01.2	Stroke: Right body involvement (left brain)	67	4.6%	42	4.6%	25	4.5%
01.3	Stroke: Bilateral Involvement	4	0.3%	3	0.3%	1	0.2%
01.4	Stroke: No Paresis	7	0.5%	4	0.4%	3	0.5%
01.9	Stroke: Other Stroke	7	0.5%	5	0.5%	2	0.4%
02.1	Non-traumatic Brain Injury	18	1.2%	13	1.4%	5	0.9%
02.21	Open Traumatic Brain Injury	1	0.1%	1	0.1%	0	0.0%
02.22	Closed Traumatic Brain Injury	19	1.3%	10	1.1%	9	1.6%
02.9	Other Brain Injury	4	0.3%	4	0.4%	0	0.0%
03.1	Multiple Sclerosis	9	0.6%	7	0.8%	2	0.4%
03.2	Parkinsonism	3	0.2%	1	0.1%	2	0.4%
03.3	Polyneuropathy	7	0.5%	4	0.4%	3	0.5%
03.4	Guillain Barre	2	0.1%	2	0.2%	0	0.0%
03.5	Cerebral Palsy	1	0.1%	1	0.1%	0	0.0%
03.8	Neuromuscular Disorders	6	0.4%	4	0.4%	2	0.4%
03.9	Other Neurologic	5	0.3%	2	0.2%	3	0.5%
04.110	Paraplegia, unspecified	3	0.2%	2	0.2%	1	0.2%
04.111	Paraplegia, incomplete	3	0.2%	2	0.2%	1	0.2%
04.112	Paraplegia, complete	1	0.1%	1	0.1%	0	0.0%
04.120	Quadriplegia, unspecified	3	0.2%	1	0.1%	2	0.4%
04.1211	Quadriplegia, Incomplete C1-4	2	0.1%	0	0.0%	2	0.4%
04.1212	Quadriplegia, Incomplete C5-8	1	0.1%	1	0.1%	0	0.0%
04.1221	Quadriplegia, Complete C1-4		0.0%		0.0%		0.0%
04.1222	Quadriplegia, Complete C5-8	1	0.1%	0	0.0%	1	0.2%
04.130	Other non-traumatic spinal cord dysfunction	13	0.9%	5	0.5%	8	1.4%
04.210	Paraplegia, Unspecified		0.0%		0.0%		0.0%
04.211	Paraplegia, Incomplete		0.0%		0.0%		0.0%
04.212	Paraplegia, Complete	1	0.1%	0	0.0%	1	0.2%
04.220	Quadriplegia, Unspecified	2	0.1%	1	0.1%	1	0.2%
04.2211	Quadriplegia, Incomplete C1-4	3	0.2%	1	0.1%	2	0.4%
04.2212	Quadriplegia, Incomplete C5-8	1	0.1%	0	0.0%	1	0.2%
04.2221	Quadriplegia, Complete C1-4		0.0%		0.0%		0.0%
04.2222	Quadriplegia, Complete C5-8	2	0.1%	1	0.1%	1	0.2%
04.230	Other traumatic spinal cord dysfunction	2	0.1%	1	0.1%	1	0.2%
05.1	Unilateral upper extremity above the elbow (AE)		0.0%		0.0%		0.0%
05.2	Unilateral upper extremity below the elbow (BE)		0.0%		0.0%		0.0%
05.3	Unilateral lower extremity above the knee (AK)	11	0.7%	5	0.5%	6	1.1%
05.4	Unilateral lower extremity below the knee (BK)	29	2.0%	19	2.1%	10	1.8%
05.5	Bilateral lower extremity above the knee (AK/AK)		0.0%		0.0%		0.0%
05.6	Bilateral lower extremity above/below the knee (AK/BK)		0.0%		0.0%		0.0%
05.7	Bilateral lower extremity below the knee (BK/BK)	2	0.1%	1	0.1%	1	0.2%
05.9	Other amputation	1	0.1%	0	0.0%	1	0.2%
06.1	Rheumatoid Arthritis		0.0%		0.0%		0.0%
06.2	Osteoarthritis	3	0.2%	2	0.2%	1	0.2%
06.9	Other arthritis		0.0%		0.0%		0.0%
07.1	Neck pain		0.0%		0.0%		0.0%
07.2	Back pain	16	1.1%	7	0.8%	9	1.6%
07.3	Extremity pain	1	0.1%	1	0.1%	0	0.0%
07.9	Other pain		0.0%		0.0%		0.0%
08.11	Status post unilateral hip fracture	337	22.9%	249	27.2%	88	15.9%

Appeals Data: eRehabData.com

07/16/09

IGC		All Appeals		Active Appeals		Closed Appeals	
		Count	Pct	Count	Pct	Count	Pct
08.12	Status post bilateral hip fractures	2	0.1%	2	0.2%	0	0.0%
08.2	Status post femur (shaft) fracture	20	1.4%	10	1.1%	10	1.8%
08.3	Status post pelvic fracture	27	1.8%	19	2.1%	8	1.4%
08.4	Status post major multiple fractures	6	0.4%	5	0.5%	1	0.2%
08.51	Status post unilateral hip replacement	166	11.3%	85	9.3%	81	14.6%
08.52	Status post bilateral hip replacements	2	0.1%	0	0.0%	2	0.4%
08.61	Status post unilateral knee replacement	287	19.5%	174	19.0%	113	20.4%
08.62	Status post bilateral knee replacements	102	6.9%	56	6.1%	46	8.3%
08.71	Status post knee and hip replacements (same side)		0.0%		0.0%		0.0%
08.72	Status post knee and hip replacements (different sides)		0.0%		0.0%		0.0%
08.9	Other orthopedic	35	2.4%	28	3.1%	7	1.3%
09	Cardiac	30	2.0%	15	1.6%	15	2.7%
10.1	Chronic Obstructive Pulmonary Disease	1	0.1%	0	0.0%	1	0.2%
10.9	Other pulmonary	1	0.1%	1	0.1%	0	0.0%
11	Burns		0.0%		0.0%		0.0%
12.1	Spina Bifida		0.0%		0.0%		0.0%
12.9	Other congenital		0.0%		0.0%		0.0%
13	Other disabling impairments	8	0.5%	5	0.5%	3	0.5%
14.1	Brain and spinal cord injury		0.0%		0.0%		0.0%
14.2	Brain and multiple fractures/amputation	1	0.1%	0	0.0%	1	0.2%
14.3	Spinal cord and multiple fractures/amputation		0.0%		0.0%		0.0%
14.9	Other multiple trauma	5	0.3%	2	0.2%	3	0.5%
15	Developmental disability		0.0%		0.0%		0.0%
16	Debility	89	6.1%	58	6.3%	31	5.6%
17.1	Infection	2	0.1%	1	0.1%	1	0.2%
17.2	Neoplasms	9	0.6%	4	0.4%	5	0.9%
17.31	Nutrition (endocrine/metabolic) with intubation/parenteral nutrition		0.0%		0.0%		0.0%
17.32	Nutrition (endocrine/metabolic) without intubation/parenteral nutrition		0.0%		0.0%		0.0%
17.4	Circulatory disorders	3	0.2%	2	0.2%	1	0.2%
17.51	Respiratory disorders-Ventilator Dependent		0.0%		0.0%		0.0%
17.52	Respiratory disorders-Non-ventilator Dependent	5	0.3%	2	0.2%	3	0.5%
17.6	Terminal care		0.0%		0.0%		0.0%
17.7	Skin disorders	3	0.2%	3	0.3%	0	0.0%
17.8	Medical/Surgical complications	1	0.1%	0	0.0%	1	0.2%
17.9	Other medically complex conditions	1	0.1%	0	0.0%	1	0.2%
Total		1469		915		554	

New England

Connecticut
Maine
Massachusetts
New Hampshire
Rhode Island
Vermont

Middle Atlantic

Pennsylvania
New York
New Jersey

South Atlantic

Delaware
Florida
Georgia
Maryland
North Carolina
South Carolina
Virginia
Washington DC
West Virginia

East North Central

Illinois
Indiana
Michigan
Ohio
Wisconsin

East South Central

Alabama
Kentucky
Mississippi

West North Central

Iowa
Kansas
Minnesota
Missouri
Nebraska
North Dakota
South Dakota

West South Central

Arkansas
Louisiana
Oklahoma
Texas

Mountain

Arizona
Colorado
Idaho
Montana
Nevada
New Mexico
Utah
Wyoming

Pacific

Alaska
California
Hawaii
Oregon
Washington