

# HIV prevention & rehabilitation: YOUR role as a provider

---



**Kris Balfanz-Vertiz**

*Schwab Rehabilitation Hospital*

*Chicago, Illinois*

Funded by Chicago Dept. of Public Health

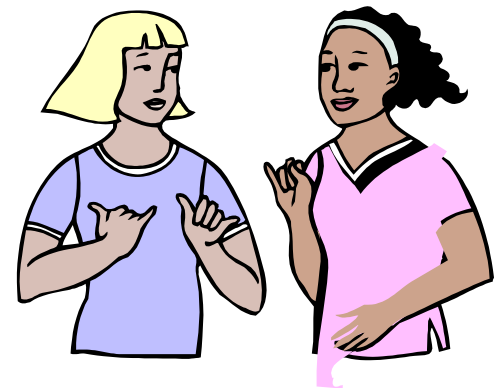
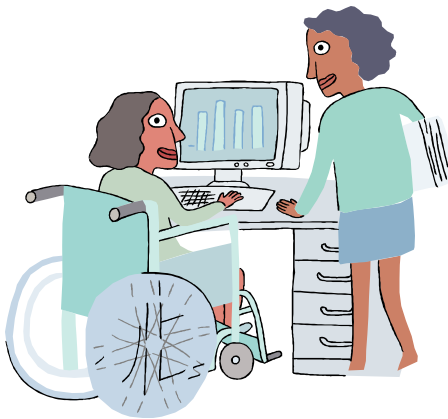


# Objectives

- Identify the risks of HIV and other STDs to people with disabilities.
- List the barriers faced by people with disabilities in receiving services related to HIV/STD testing, education and prevention.
- Summarize how a health program can be created for people with disabilities, or how an existing program can adapt their program to meet the needs of people with disabilities.

# Objectives

- List several ways to meet the needs of people with various types of disabilities.
- Identify specific methods for making their program / services / agency more accessible to people with disabilities.





# Schwab Rehabilitation Hospital

- West side of Chicago
- African-American and Hispanic / Latino
- Low socioeconomic status
- High dropout rate / limited literacy
- High-crime community



# Deaf Access Program

- Housed at Mount Sinai Hospital
- Serves over 1300 patients, more than any other health system in the U.S.
- Staff includes:
  - Deaf manager
  - 3 ASL-fluent doctors
  - 5 on-site interpreters



# Cultural Competence



# Cultural competence re: disability

How HIV prevention programs are impacted:

- Accessible location
- Awareness of needs of participants from the inner-city
- Disability advocacy
- Network with disability & other community organizations



# HIV risk & disability

- Have equal or greater exposure to all known risk factors for HIV (Yale/World Bank Global Survey)
- Are as likely to be sexually active and to use drugs & alcohol (UNICEF 1999)
- Even more likely to be victims of violence or rape (Groce and Trasi 2004)
- Are among the poorest & most stigmatized people in the world (Elwan 1999)



# HIV Exposure Education for the Deaf

- Received CDPH funding for 2005 - 2006
- Educators were fluent in ASL
- Community education, individual risk assessment, and group education workshops
- On-site HIV testing



# Schwab's HIV Prevention Program for People with Disabilities

- Received CDPH funding for 2007 - 2010
- Individual risk assessment, group education workshops, & community education
- Free, confidential testing for people with disabilities, employees, & visitors



# Strategies for risk-reduction: Individual level interventions

Risk reduction planning / issues specific to people with disabilities:

- Disability & sexuality
- Social isolation
- Depression & adjustment to disability
- Disability support services / agencies:  
DRS, Paratransit, SSI/SSDI
- Needle injections



# Strategies for risk-reduction: Group Level Interventions

## Day-long workshop

- HIV / hepatitis / STI education
- VOICES / VOCES (CDC DEBI model)
- Practice: condom use & condom negotiation

Offer workshops in English, Spanish, & ASL



**POP (guys):  
Protecting the Disability Community**

**Available at:**

**[http://www.sinai.org/rehabilitation/extended\\_services/hiv-prevention.asp](http://www.sinai.org/rehabilitation/extended_services/hiv-prevention.asp)**



# Recommendations for developing an accessible program

- Understand that people with disabilities **DO HAVE SEX**
- Health educators should be fluent in the language of their participants; at a minimum, interpreters should be available
- Limited hand/finger mobility may make condom use difficult



# Recommendations for developing an accessible program (cont.)

- Network with disability organizations
- Refer to disability agencies as appropriate
- People-first language: “person with a disability,” not “handicapped person” (more next slide)



# When referring to a person with a disability

## Don't use...

Wheelchair bound

Cripple

Invalid

Unfortunate

Incapacitated

Retard

Victim

Handicap

Deaf and Dumb

Afflicted

Stricken with...

## Do use terms like...

A person with quadriplegia

A person with paraplegia

A person who uses a wheelchair

A person who uses mobility aids

A person with multiple sclerosis

A person with cerebral palsy

A person with mental retardation

A person with a learning disability

A person with a hearing disability

A person with a disability

The person's name



# Recommendations for developing an accessible program (cont.)

- Be wheelchair accessible:

- Stairs/ramp
- Door width
- Bathroom

- ADA requirements:

<http://www.usdoj.gov/crt/ada/adahom1.htm>

- Provide interpreters

# Questions?

## Your ideas or tips?

\*\*\* Activity\*\*\*



# Further Information

Elwan, A. 1999. *Poverty and Disability: A Survey of the Literature*. Washington: World Bank, Social Protection Unit, Human Development Network.

Groce, N. & Trasi R. 2004. "Rape of individuals with disability: AIDS and the folk belief of virgin cleansing." *The LANCET*, Vol. 363:1663-1664, May 22.

UNICEF 1999. *Global survey of adolescents with disability: an overview of young people living with disabilities: their needs and their rights*. New York: UNICEF Inter-Divisional Working Group on Young People, Programme Division.

Yale University & World Bank 2004. *Global Survey on Disability and HIV/AIDS at a Glance*. 14 November 2007.

<http://cira.med.yale.edu/globalsurvey/Fact%20sheet.pdf> >



# For More Information

**Maria De La Mora**

HIV Coordinator / Research Assistant

773-522-2010, ext. 5026

[maria.delamora@sinai.org](mailto:maria.delamora@sinai.org)